

Shoreline 4x4
4WD ACCESSORIES

Shoreline 4x4 Extreme Series Bullbar X-1



Fitting instructions for Ford Ranger PX Mk II

Front TOW points only - Rated to 3.75T - NOT FOR SNATCHING

www.slx4x4.com.au

(08) 9444 2946

126 Hector St W - OSBOURNE PARK W.A. 6017

shoreline 4 X 4

4WD ACCESSORIES

1. Congratulations on purchasing your very own Shoreline 4x4 Extreme Series Bullbar. To start, clear an area around the front of your car and unwrap the bar.



2. With the bar unwrapped, unbolt the factory bash plate.



3. Unbolt the bumper from the front quarter panels and remove the clips holding the inner liner to the bumper.



4. Remove the four bolts on the under side of the bumper.



www.slx4x4.com.au

(08) 9444 2946

126 Hector St W - OSBOURNE PARK W.A. 6017

shoreline 4 X 4

4WD ACCESSORIES

5. Remove your license plate from the factory bumper.



6. Carefully remove the top grill plastic, pushing the plastic tags with a flat head screw driver as seen in the next image below.



7. *Plastic tag



8. Unbolt the top grill mount.



www.slx4x4.com.au

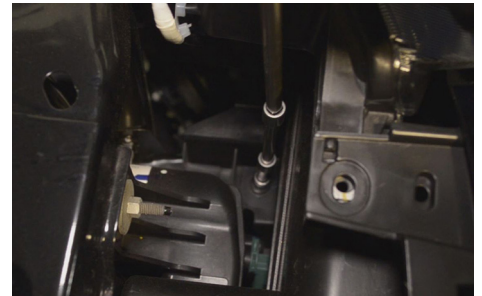
(08) 9444 2946

126 Hector St W - OSBOURNE PARK W.A. 6017

shoreline 4 X 4

4WD ACCESSORIES

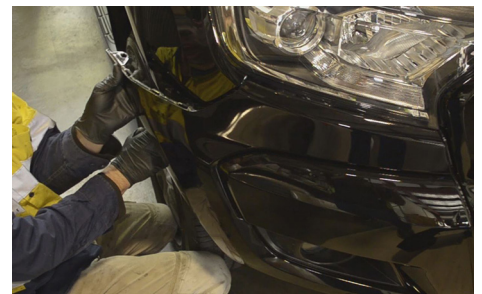
9. Unbolt the lower grill mount, you will need a long extension and socket to reach this bolt.



10. Carefully remove the plastic push clips. These are hard to locate but are right behind the mesh section of the grill.



11. Pop the front bumper away from the car.



12. Remove the lower bolts holding the factory air dams. Do not remove the hole air dams.



www.slx4x4.com.au

(08) 9444 2946

126 Hector St W - OSBOURNE PARK W.A. 6017

shoreline 4 X 4

4WD ACCESSORIES

13. Tear away the plastic on the crash bar and dispose.
Remove the factory radar unit from the impact bar.



14. Unbolt and remove the factory crash bar.



15. Remove the metal L brackets that are visible with the air dam moved out the way. Once removed, bolt the air dam back on securely.



16. Mark and trim the factory air dams as shown.



www.slx4x4.com.au

(08) 9444 2946

126 Hector St W - OSBOURNE PARK W.A. 6017

shoreline 4 X 4

4WD ACCESSORIES

17. Take care and pry away the metal antenna.



18. Unbolt the metal bracket that secures the inner wheel liner to the car.



19. Cut the cable ties holding the antenna wiring to the car ready to relocate.



20. Mount the antenna onto the air dam using the factory clip for the lower mount and drill a new hole to push in one of the clips spare from the bumper.



www.slx4x4.com.au

(08) 9444 2946

126 Hector St W - OSBOURNE PARK W.A. 6017

shoreline 4 X 4

4WD ACCESSORIES

21. Seperate the bar from the bracket.



22. Now mount the bracket using the four factory bolts and eight supplied nuts and bolts.



23. Mark and trim the inner wheel guard.



24. Pry the radar unit from the bracket and unscrew the star head bolts.



www.slx4x4.com.au

(08) 9444 2946

126 Hector St W - OSBOURNE PARK W.A. 6017

shoreline 4 X 4

4WD ACCESSORIES

25. Mount the radar unit to the bar using the supplied hardware.



26. Remove the grill from the factory bumper by pushing the clips.



27. Mark and trim the grill as shown. Take care as this is a double skinned grill, a grinder or reciprocating saw will be best suited.



28. Remove the plastic mouldings from underneath the headlights.



www.slx4x4.com.au

(08) 9444 2946

126 Hector St W - OSBOURNE PARK W.A. 6017

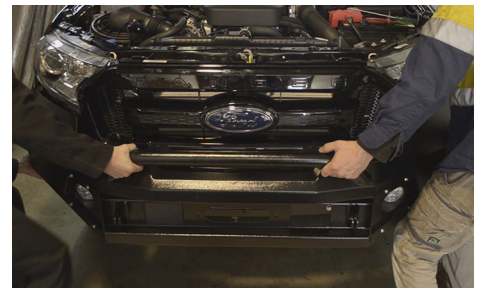
shoreline 4 X 4

4WD ACCESSORIES

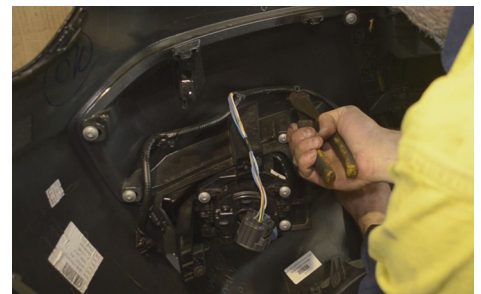
29. Mount the grill back onto the car reusing the factory fittings.



30. With help, carefully mount the bar to the bracket using the supplied hardware.



31. Remove the front sensor wiring from the factory bar and secure to the front of the car.



32. Fit the front parking sensors reusing the factory sensor surrounds.



www.slx4x4.com.au

(08) 9444 2946

126 Hector St W - OSBOURNE PARK W.A. 6017

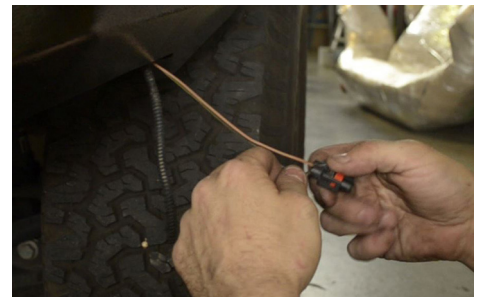
shoreline 4 X 4

4WD ACCESSORIES

33. Fit the new bash plate over the bullbar and mount using the supplied nuts and bolts.



34. Wire in the fog lights, test and you're ready to go!



www.slx4x4.com.au

(08) 9444 2946

126 Hector St W - OSBOURNE PARK W.A. 6017