



## RP-RAN02

Australian Design Registration— 201516778

**Rated to 5000kgs  
per tow point**

### RP-RAN02 FITMENT GUIDE

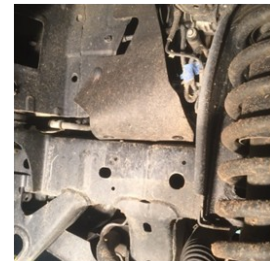
The RP-RAN02 has been designed for fitment on Gen 2 Ranger & BT-50 **WITHOUT** a Bull Bar. If a Bull Bar is fitted modifications might be required to the bar bracket.

Required for both sides of vehicle:

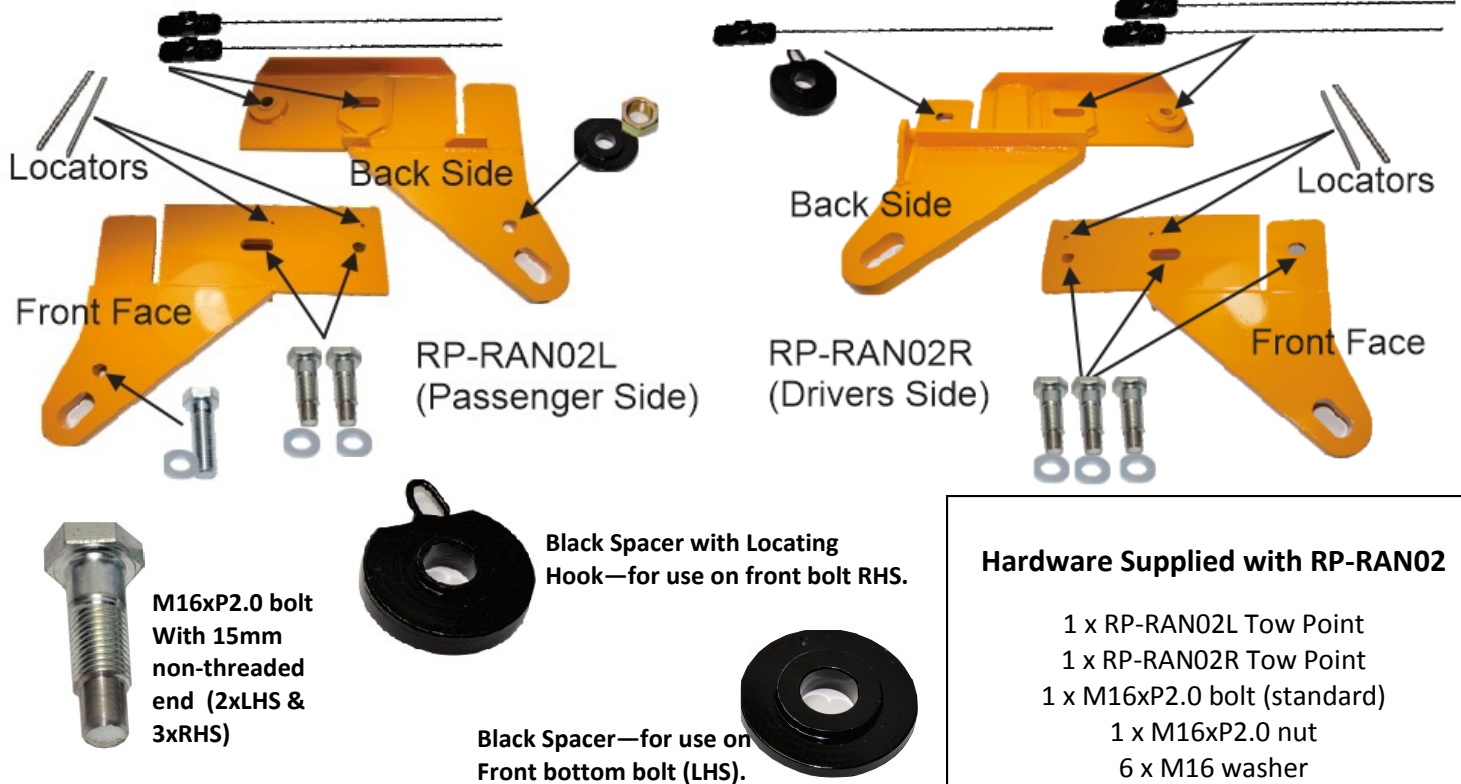
1. Place vehicle on hoist & remove both front wheels
2. Remove Bash Plate (optional—but makes it easier!)
3. Remove two screws from lower edge of the rubber inner guard flap, both sides. And tuck flaps up in behind the chassis rail (out of the way for tow point installation).
4. In the kit there are 5 x 'Nuts on Wire's' (NOW's) and equivalent lead edge bolts (with 15mm non-threaded ends). Pre-screw & undo these to ensure they have a smooth easy fit. If not, apply some lubricant until they screw freely.



Two Screws to be removed from rubber inner guard flap



Tuck flaps up in behind chassis rail (out of the way)



#### Hardware Supplied with RP-RAN02

- 1 x RP-RAN02L Tow Point
- 1 x RP-RAN02R Tow Point
- 1 x M16xP2.0 bolt (standard)
- 1 x M16xP2.0 nut
- 6 x M16 washer
- 1 x Black Spacer (standard round)
- 1 x Black Spacer (with locating hook)
- 5 x M16xP2.0 bolt (15mm non threaded)
- 5 x M16xP2.0 Nut on Wire (NOW)
- 4 x 4mmx70mm locators (dowel pins)

**Ensure all supplied and specified components are used during the installation of tow points. Failure to do so will significantly reduce the Working Load Limit (WLL) specified for each individual point (5000kgs), which can result in serious injury or death.**



## RP-RAN02

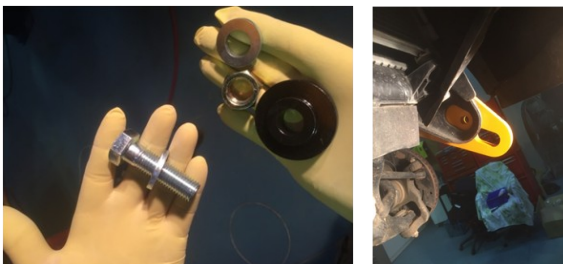
### Specific Installation Tips for Passenger & Drivers Sides

#### PASSENGER SIDE

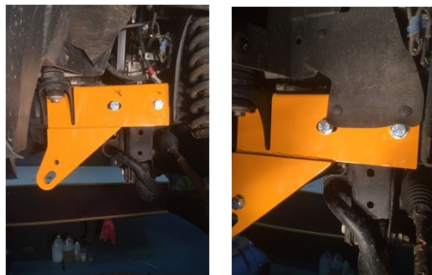
1. Bend shape on NOW's to prefit required location



2. Insert NOW's into chassis rail in order of: rear first, forward second. Push wire for rear NOW to upper section of chassis rail to allow clearance for the front NOW to pass.
3. Place tow point into position on chassis rail. Offer up plate at a slight angle to fit behind the body mount bracket. Insert 70mm locators (dowel pins).
4. Hand screw lead edge bolts, fitted with standard washer, to suit. Install rear bolt first, then forward bolt second. Finger tight only.
5. Install standard round black spacer behind existing tow point hole, and fit bolt & washer to suit.



6. Tighten bolts to 160nm, keeping locators (dowel pins) in place to stop NOW's from spinning.
7. Remove locators (dowel pins). Fold rubber inner guard flap down and refit screws to pin holes in point.



8. Tighten front bolt to 160nm.

#### DRIVERS SIDE

1. Bend shape on NOW's to prefit required location



2. Insert NOW's into chassis rail in order of: rear first, forward second (Push wire for rear NOW to upper section of chassis rail to allow clearance for the front & middle NOW's to pass) and middle third.
3. Install Black Spacer with locating hook to chassis rail for front hole.



4. Place tow point into position on chassis rail. Offer up plate at a slight angle to fit behind the body mount bracket. Insert 70mm locators (dowel pins).
5. Hand screw lead edge bolts, fitted with standard washer, to suit. Install rear bolt first, then forward bolt second, and middle bolt last. Finger tight only.
6. Tighten bolts to 160nm, keeping locators (dowel pins) in place to stop NOW's from spinning.
7. Remove locators (dowel pins). Fold rubber inner guard flap down and refit screws to pin holes in point.



Australian Design Registration 201516778

#### Bolt Torque Specs

	8.8	10.9	12.9
<b>M10</b>	41-60 Nm	59-85 Nm	65-94 Nm
<b>M12</b>	71-105 Nm	102-150 Nm	114-164 Nm
<b>M14</b>	112-168 Nm	161-240 Nm	182-265 Nm
<b>M16</b>	175-260 Nm	250-371 Nm	282-406 Nm

Always use tow points as a matched pair teamed with an equalising bridle during any recovery situation.



RECOMMENDED FOR 4WD SPECIALISTS MECHANICS TO FIT