

Product Code:

EL-FS-750

Heavy Duty Fridge Slide

L780 x W479 x H80mm – 16kg



## Typical install sequence

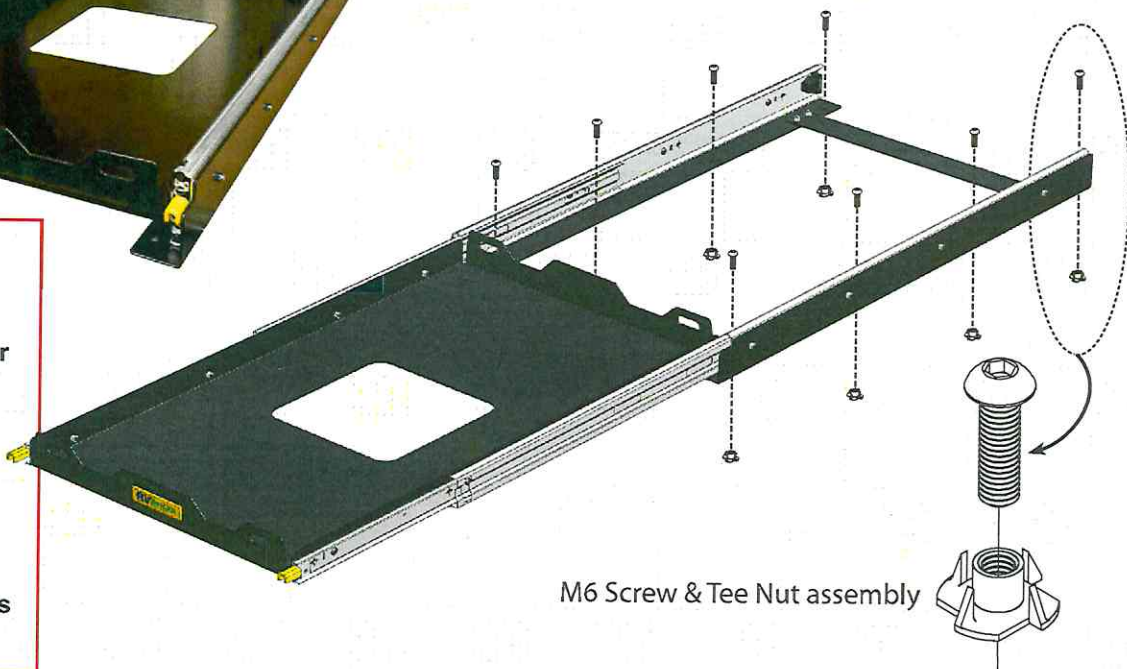
QTY	INCLUDED IN YOUR KIT
8	M6 x 20mm Stainless Steel Screws
8	M6 Tee Nuts
Please check before assembly	



### NOTE:

This instruction sheet is for fitting to an RV Storage Solutions Drawer System, RV fridge slide Mount Board, or similar plywood timber top of 12-18mm thickness.

Fixing to any other surface other than an even Timber surface will require different fasteners not supplied in this kit.

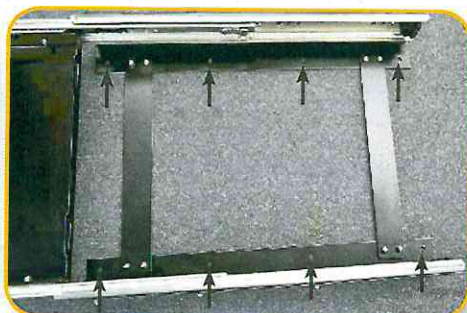


M6 Screw & Tee Nut assembly

*The EL-FS-750 is rated to carry 125kg of evenly distributed weight, the runners feature a built in lock-in / lock-out mechanisms and full extension for maximum clearance from the side of your car, van or RV.*

## Preparing the vehicle for the Fridge Slide

- If the fridge slide is to be fitted to an undrilled timber top, ensure the timber is **minimum 12mm thick**. Position the fridge slide on the timber top where required, (with or without carpet).



- Open the slide by depressing the two yellow lock levers on the left and right, then pull slide forward to reveal the fixing holes in the side rails.
- Mark the eight drilling points through the slide fixing holes with a permanent marker (pic 2 & 3).
- Drill eight 7mm holes for the Tee Nuts to be fitted into.

RV Storage Solutions take no responsibility for the result of incorrect use of these installation instructions.  
Due to RVSS's continuous improvement program, information may change without notice.

Product Code:

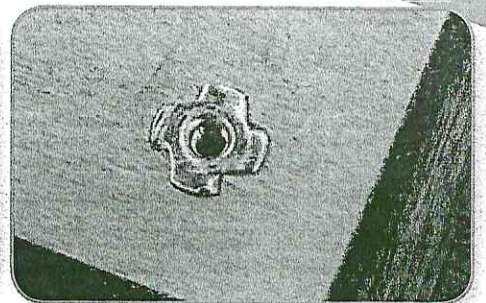
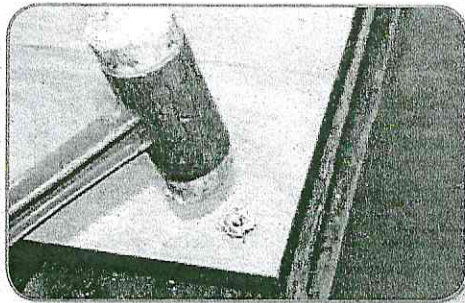
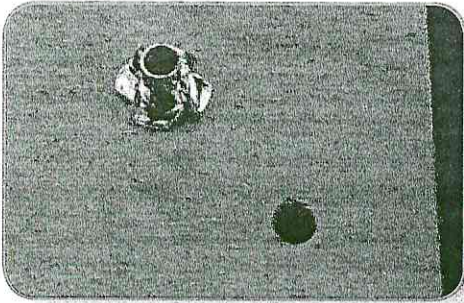
EL-FS-750

Heavy Duty Fridge Slide

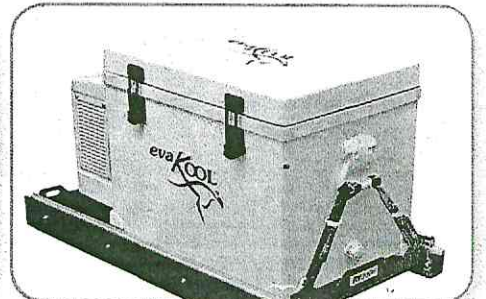
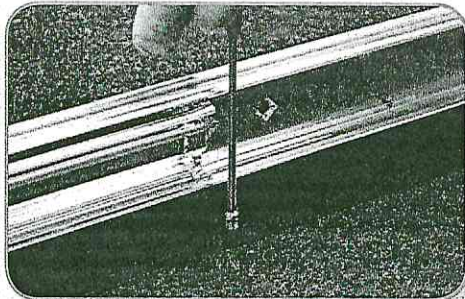
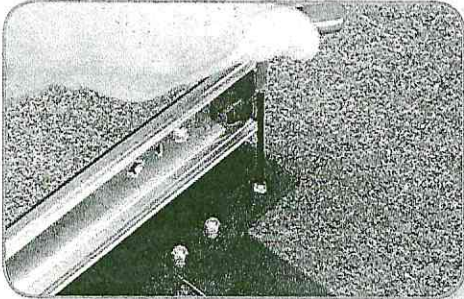
L780 x W479 x H80mm – 16kg

## Typical install sequence

Preparing the vehicle for the Fridge Slide (cont.)



- If installing on an RV drawer system, unscrew and remove the timber top from the drawer system and flip it over as the Tee Nuts are to be inserted on the underside. Insert the Tee Nuts into the eight holes ensuring the nuts are upright and square to the hole and knock them home with a nylon mallet or similar to avoid damaging the nuts.



## Fitting the Fridge Slide

- Replace the timber top to the drawer system and using the eight M6 x 20mm Stainless Steel bolts, affix the fridge slide to the top. Vacuum up all swarf and return fridge slide to its locked position. When fitting a fridge always use quality tie down straps and never travel with a fridge unrestrained. Tie down straps developed specifically for the fridge slide are available from RV Storage Solutions.
- This slide has been made to handle fridges up to the 50 litre style such as Engel, Waeco and Bushman, or fridges with the same dimensions and specifications. The slide is designed to carry fully laden fridges up to 125kg in total, specifically for private use in Recreational Vehicles only. The RVSS fridge slide is NOT recommended for commercial use and no warranty applies if used so.

## IMPORTANT NOTES

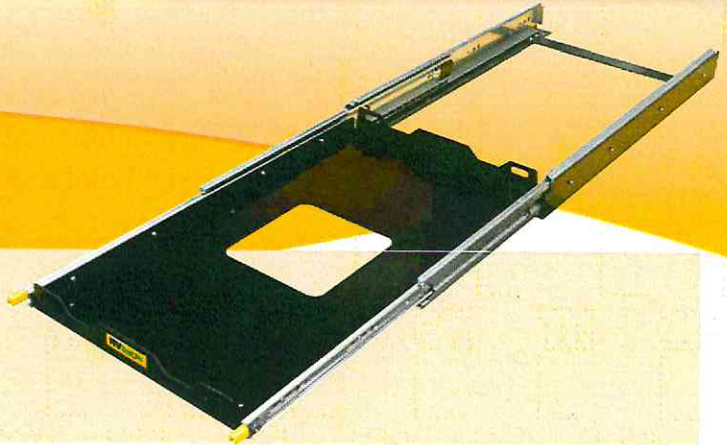
- The slide must be securely and evenly bolted down to the floor of the vehicle or to wherever the slide is to be used.
- Under no circumstances can the slide be used other than when it is fixed down correctly on a smooth even surface with no contortion of the frame.
- It is advised that you use an RV Storage Solutions Mount Board or similar, when fixing directly to a vehicle.
- The sliding tray of the EL-FS-750 slide is activated by depressing the two yellow levers on the front of each runner and pulling forward.
- Ensure that the tray firmly locks into place when returning the tray to its inward position. Locking positions are in or out.
- The EL-FS-750 slide is not water proof, and therefore is not designed in an external space open to the elements.
- A warranty of 1 year applies to this slide. Refer to the warranty schedule.

Product Code:

EL-FS-750

Heavy Duty Fridge Slide

L780 x W479 x H80mm – 16kg



# Warranty

Mailing Address:

RV Storage Solutions

PO Box 176

Gisborne,

Victoria 3438

Contact:

Phone (03) 5428 4426

Fax (03) 5428 4538

Thank you for purchasing an RV Storage Solutions quality product. RV Storage Solutions warrants this product for a period of 1 year against any material or manufacturing defect, providing you do not misuse, abuse or over load the slide past its rated capacity.

### IMPORTANT NOTE:

We offer a one year warranty from date of purchase on all moving and structural parts should they be found to be faulty. To make a warranty claim, proof of purchase or equivalent documentation must be supplied for any warranty claims to be considered.

RV Storage Solutions or its Agent must have access to the product to assess the nature of any warranty issue.

The RV Storage Solutions warranty shall be void for the following reasons:

- Inability to provide proof of purchase or equivalent documentation.
- Product not installed to relevant RV Storage Solutions Instructions.
- Repair, replacement of parts or modifications including drilling to the slide undertaken without consent.
- Failure to observe care, cleaning and maintenance.
- Damage from misuse, abuse or overloading.
- Product used for commercial application.

**NOTE: THE FRIDGE MUST BE SECURELY TIED DOWN TO THE SLIDE OR WARRANTY WILL BE VOID.**

## RV Storage Solutions EL-FS-750 Warranty

Please complete this form and send it to RV Storage Solutions at the above address within 30 days of purchase.

Name / Registered Owner: .....

Address: .....

State: ..... Post code: .....

Ph No: ..... Mob .....

Make and Model: .....

Date Purchased: .....

Selling Retail Outlet/Installer: .....

Address: .....

DISCLAIMER: RV Storage Solutions, its proprietors and its employees, shall not be responsible or liable for any damage or injury arising from the use of our Slides in whatever situation or event and are relieved of any and all obligations, responsibilities and liabilities direct or consequential in the event of such damage or injury occurring. Because of the inherent use of 4WD vehicles and Caravans and the terrain and conditions they encounter, the purchaser has our products installed at their own risk. Whilst every endeavour has been made to make our product as good as they can be for the purpose intended, we cannot be responsible for what is placed in or on them or how or what they are used for. We recommend that extreme care is taken when loading and unloading items on an RV slide.