



**WORLD'S BEST
ALLOY BULLBARS**

East Coast Bullbars (ECB Pty Ltd)

Tel: 07 3897 5700

Fax: 07 3283 1168

ecb@ecb.com.au www.ecb.com.au

29 Snook St
Clontarf QLD 4019
Australia

Po Box 122
Margate QLD 4019
Australia

EAM114SY

REPLACES: 16.01.18

REVISED: 04.06.18

FITTING INSTRUCTIONS MITSUBISHI PAJERO SPORTS GLX / GLS 01/16on WINCH PROTECTION BAR VEHICLE FRONTAL PROTECTION SYSTEM (VFPS) FOR AIR BAG & ADR COMPLIANT VEHICLES

Check installation hardware before commencing.

1. Open bonnet.
2. Remove steel under body guard. Completely remove two 12mm head bolts at front, loosen only two 12mm head bolts at rear and remove from vehicle.
3. Remove twelve plastic screw clips from grille cover panel and remove plastic panel. **See figure 1.**
4. Remove one black plastic push pull clip from top of grille beside headlight per side. Pulling gently forward on lower grille to release clips from bumper and remove grille from vehicle. **See figure 2**
5. Remove three 10mm head bolts from top of bumper between headlights. Remove four 10mm head screws from front wheel arch, and two push/pull clip from underside of bumper.
6. Gently lever out the lower blanking trims by unclipping from behind the bumper while pulling on the front. Remove one 10mm head bolt holding the bumper onto the metal stay under each surround. **See figure 3.** Remove plastic bumper from vehicle.
7. Remove vertical bumper stay, two 10mm head nuts (per side). **See figure 4.**
8. Remove air dams from each side
9. Remove five 14mm head bolts from front cross member and remove bumper reinforcement.
10. Drill 25mm hole through chassis as shown in **figure 5.** **Blow filings clear and treat all exposed metal with a rust inhibitor.** Fit 3/8 x 2 bolt, spring washer and flat washer through the drilled hole and out the existing hole. Slide 30mm spacer tube onto the bolt.
11. Place 3/8 x 4-inch bolt, flat washer and 58mm tube spacer (supplied) into chassis rail per side as shown in **figure 6.**
12. Fit ECB steel winch mounting bracket onto front of cross member using four M10 x 1.25 x 40 bolts, spring washers, flat washers (supplied) and 10mm spacer plate with the 4 mm spacer facing up (supplied). (Finger tighten only)
13. Fit ECB steel mounting brackets over cross member to outside of chassis rail using bolts supplied. One M10 x 1.25 x 40 bolt, spring washers, flat washer (supplied) in front hole of chassis rail into captive nut. One M10 flat washer, spring washer and 3/8 nut (supplied) in rear hole. Flat washer spring washers and nut (supplied) onto 3/8 x 4-inch bolt in rail.
14. Use four M10 x 1.25 x 40 bolt, flat washer, spring washer and nuts (supplied) to secure the mount to the winch frame piece. Align mount to front of vehicle **and tighten all bolts. See figure 7.**



**WORLD'S BEST
ALLOY BULLBARS**

East Coast Bullbars (ECB Pty Ltd)

Tel: 07 3897 5700

Fax: 07 3283 1168

ecb@ecb.com.au www.ecb.com.au

29 Snook St
Clontarf QLD 4019
Australia

Po Box 122
Margate QLD 4019
Australia

15. Fit fairlead and winch as per manufactures instructions.
16. Fit control box onto ECB steel control box mount and fit mount to winch cradle using bolts supplied. Two M10 x 1.25 x 40 bolts, flat washers, spring washers and nuts (supplied).
17. Trim air dam to not interfere with the mounts.
18. Refit the air dam into position using original equipment.
19. Disconnect indicator and parking lights on vehicle. Install ECB quick click wiring harnesses (supplied) between disconnected harness and indicator / park lights on vehicle. Run wiring out from under lights ensuring clearance from sharp edges and moving parts.
20. Check template for correct sizing and carefully cut out. Using ECB bumper cut template (supplied), mark out bumper for cutting. Use masking tape to avoid damaging paint work when cutting bumper. Attach 3mm clip lock (supplied) to trimmed edge. **See figure 8.**
21. Refit bumper to vehicle using original equipment in the reverse of step 5.
22. Trim the lower grille to fit the mounts and winch and refit to vehicle.
23. Fit ECB LED indicator / park lights into protection bar as per instructions supplied with the LED indicator kit. **See figure 9.**
24. Attach ECB fog light bracket only to protection bar. Place M6 x 20 bolts, spring washers (supplied) through light mount from inside and attach nut to top. Slide assembly into light mount in Protection bar and centralize light to hole. **TIGHTEN FIRM ONLY. See figure 10.**
25. Attach 6mm clip lock trim (supplied) to top of ECB protection bar. **NOTE:** Trim off lower edge on an angle so trim will sit flush with end of protection bar. **See figures 11, 12 and 13.**
26. Fit ECB protection bar to outside of steel mount using three M12 x 40 bolts, flat washers, spring washers and nuts (supplied) per side. Align protection bar to front of vehicle **and tighten all bolts. See figures 14 and 15.**
27. Install and connect fog light. Connect and check indicator / park lights for correct operation.
28. Refit upper grille in the reverse steps of 4.
29. Fit ECB side under body guards using three M6 x 30 bolts flat washers and nyloc nuts (supplied) per side. **Do not tighten bolts until all bolts are fitted.**
30. Refit plastic guard liner and mark and trim of excess liner, secure to under body guard with self tapers supplied. When trimming liner remove humps at lower edge so liner fits flush. **CAUTION:** Ensure placement of screws (supplied) on passengers side is away from washer bottle. Screws placed too high could create a rubbing issue on the bottle. **See figure 16.**
31. Refit steel under body guard using original equipment in the reverse step of 1.

ENSURE NUMBER PLATE IS CLEARLY VISABLE



**WORLD'S BEST
ALLOY BULLBARS**

East Coast Bullbars (ECB Pty Ltd)

Tel: 07 3897 5700

Fax: 07 3283 1168

ecb@ecb.com.au www.ecb.com.au

29 Snook St
Clontarf QLD 4019
Australia

Po Box 122
Margate QLD 4019
Australia

Note: When fitting/refitting the licence plate to the vehicle, ensure there is no obstruction to licence plate vision in accordance with local authorities. If required relocate licence plate to an alternate location.

Further VFPS Notes:

- a) Do not attach VFPS to the vehicle using anchorages not intended for this purpose (e.g. engine mounting bolts).
- b) Do not use this product for any vehicle make or model, other than those specified by the VFPS manufacturer.
- c) Do not remove the plaque or label from the VFPS.
- d) Do not modify the structure of the VFPS in any way.
- e) No accessory or fitment should project forward of the VFPS forward profile.
- f) **ENSURE THESE INSTRUCTIONS ARE LEFT WITH VEHICLE OWNER AND/OR OPERATOR.**

IMPORTANT INFORMATION

Periodically check bolts and nuts for correct tightness, especially if travelling on rough roads

FITTING KIT

1 – Left mounting bracket	24 – M10 flat washers
1 – Right mounting bracket	14 – M10 spring washers
1 – Pair Steel mount gussets	6 – M10 x 1.25 nuts
1 – Winch mounting bracket	2 – M6 x 20 bolts
1 – Control box mount	10 – M6 x 30mm bolts
1 – Winch frame spacer plate	22 – M6 flat washers
1 – Pair Under body guards	4 – M6 spring washers
2 – 10 NB tube spacer 30 mm long	10 – M6 nyloc nuts
2 – 10 NB tube spacer 58 mm long	2 – M6 nuts
6 – M12 x 1.75 x 40mm bolts	4 – 8 gauge 18-25 button head self tapping screws
12 – M12 flat washers	1 – ECB LED Indicator / Park light kit (ICLED105ECB)
6 – M12 spring washers	1 – Quick Click Kit (IC16MIPAHIPDH)
6 – M12 x 1.75 nuts	1 – Pair fog lights
2 – 3/8 x 4 inch bolts	1 – Quick Click kit (IC16MIPASPFLECBH)
2 – 3/8 x 2 inch bolts	4 – Fog light surrounds
4 – 3/8 nuts	1 – 2500 length 6mm clip lock trim
12 – M10 x 1.25 x 40mm bolts	2 – 400 length 3mm clip lock trim

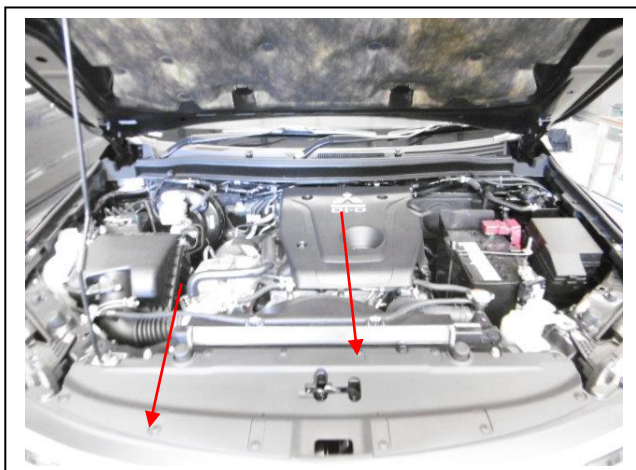


Figure 1

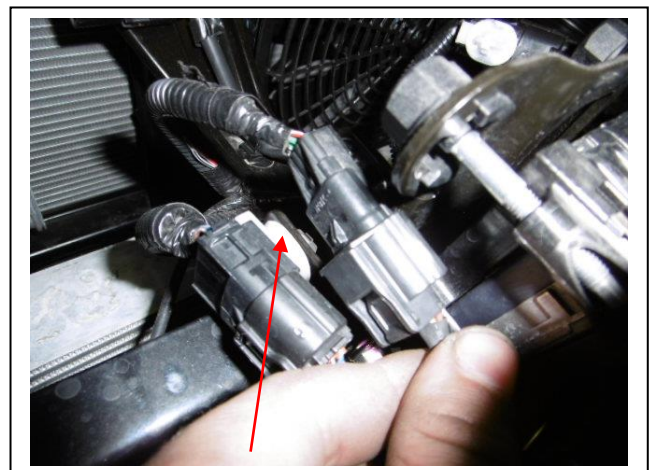


Figure 2



East Coast Bullbars (ECB Pty Ltd)

Tel: 07 3897 5700

Fax: 07 3283 1168

ecb@ecb.com.au www.ecb.com.au

29 Snook St
Clontarf QLD 4019
Australia

Po Box 122
Margate QLD 4019
Australia

WORLD'S BEST
ALLOY BULLBARS

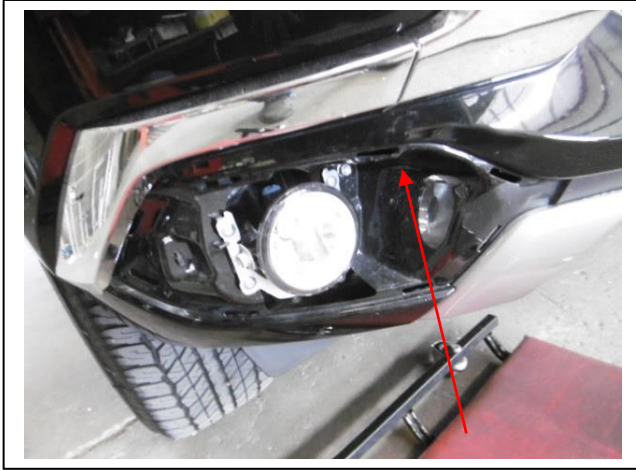


Figure 3

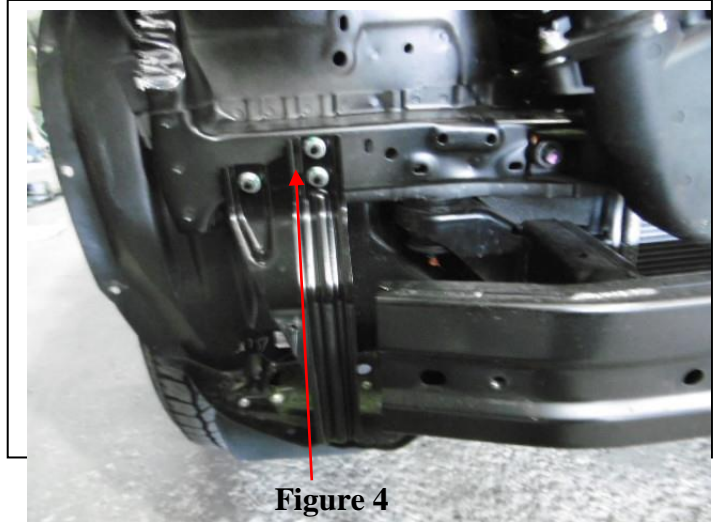


Figure 4

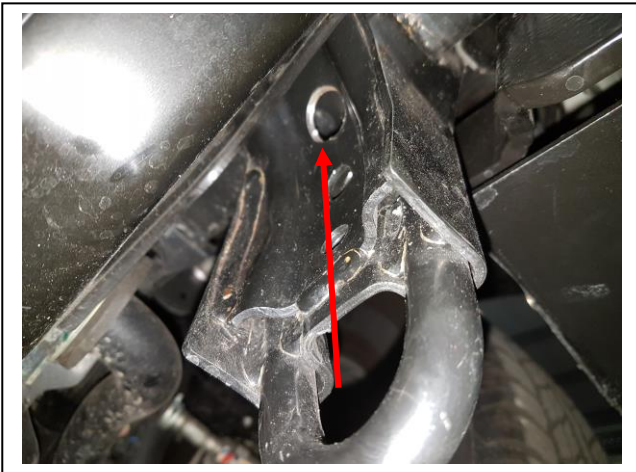


Figure 5



Figure 6:



Figure 7



Figure 8.



East Coast Bullbars (ECB Pty Ltd)

Tel: 07 3897 5700

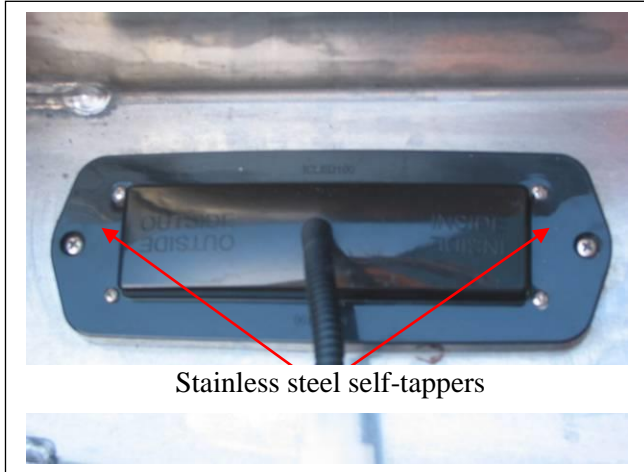
Fax: 07 3283 1168

ecb@ecb.com.au www.ecb.com.au

29 Snook St
Clontarf QLD 4019
Australia

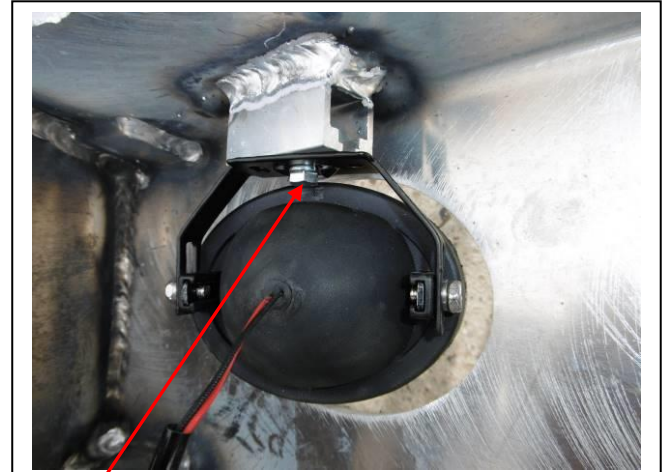
Po Box 122
Margate QLD 4019
Australia

WORLD'S BEST
ALLOY BULLBARS



Stainless steel self-tappers

Figure 9



M6 bolt

Figure 8

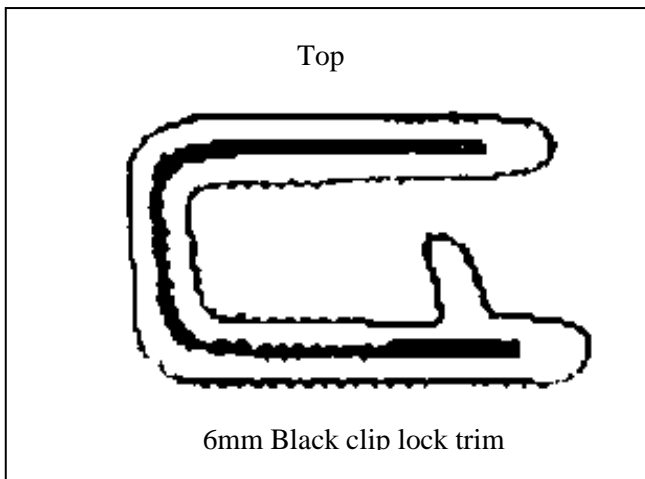


Figure 10.

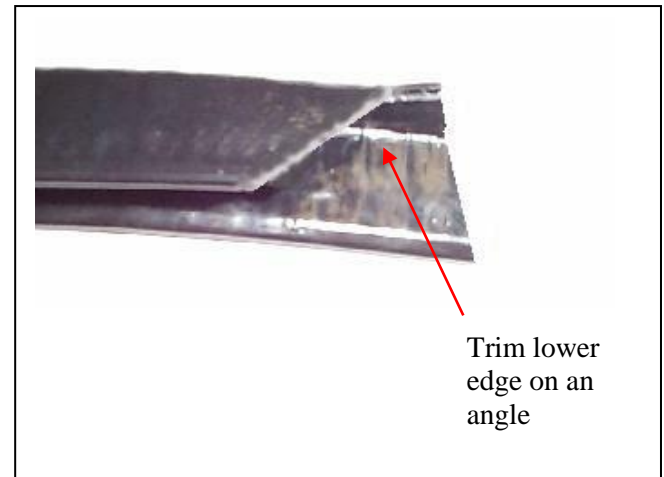


Figure 11.

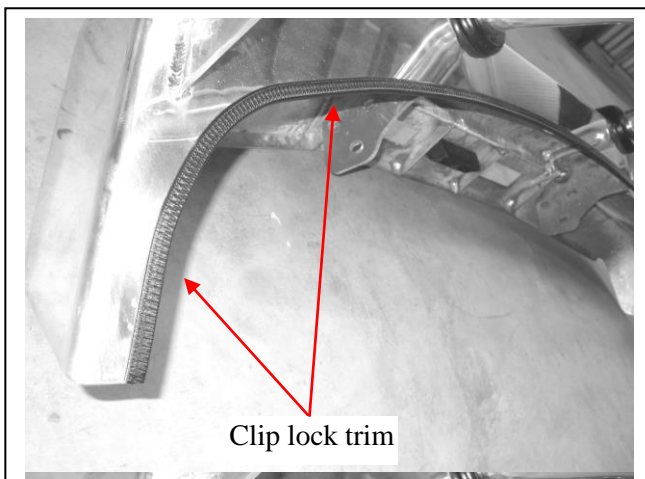


Figure 12.



Figure 13



**WORLD'S BEST
ALLOY BULLBARS**

East Coast Bullbars (ECB Pty Ltd)

Tel: 07 3897 5700

Fax: 07 3283 1168

ecb@ecb.com.au www.ecb.com.au

29 Snook St
Clontarf QLD 4019
Australia

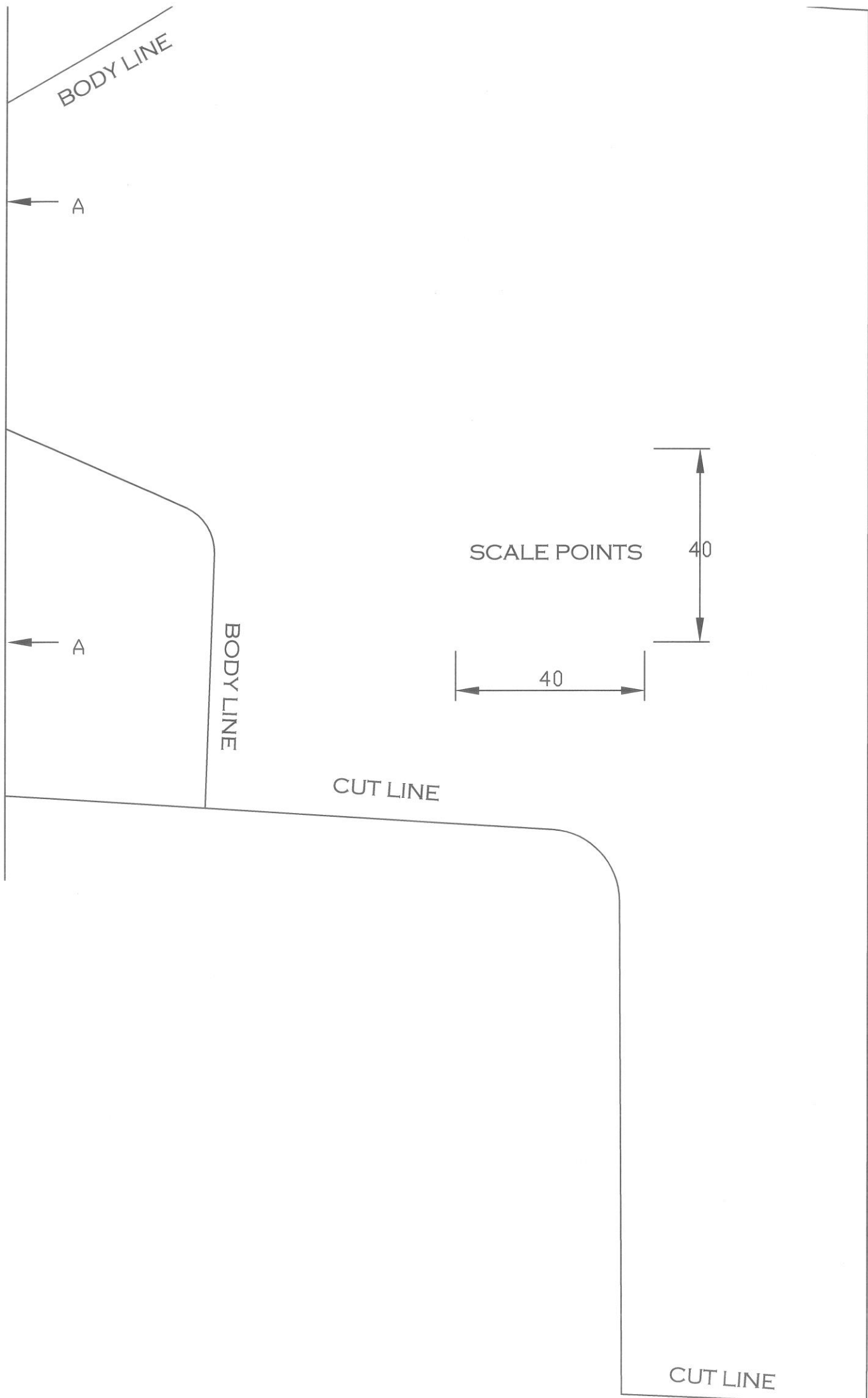
Po Box 122
Margate QLD 4019
Australia



Figure 14



Figure 16: liner trimmed to fit guard





**WORLD'S BEST
ALLOY BULLBARS**

East Coast Bullbars (ECB Pty Ltd)

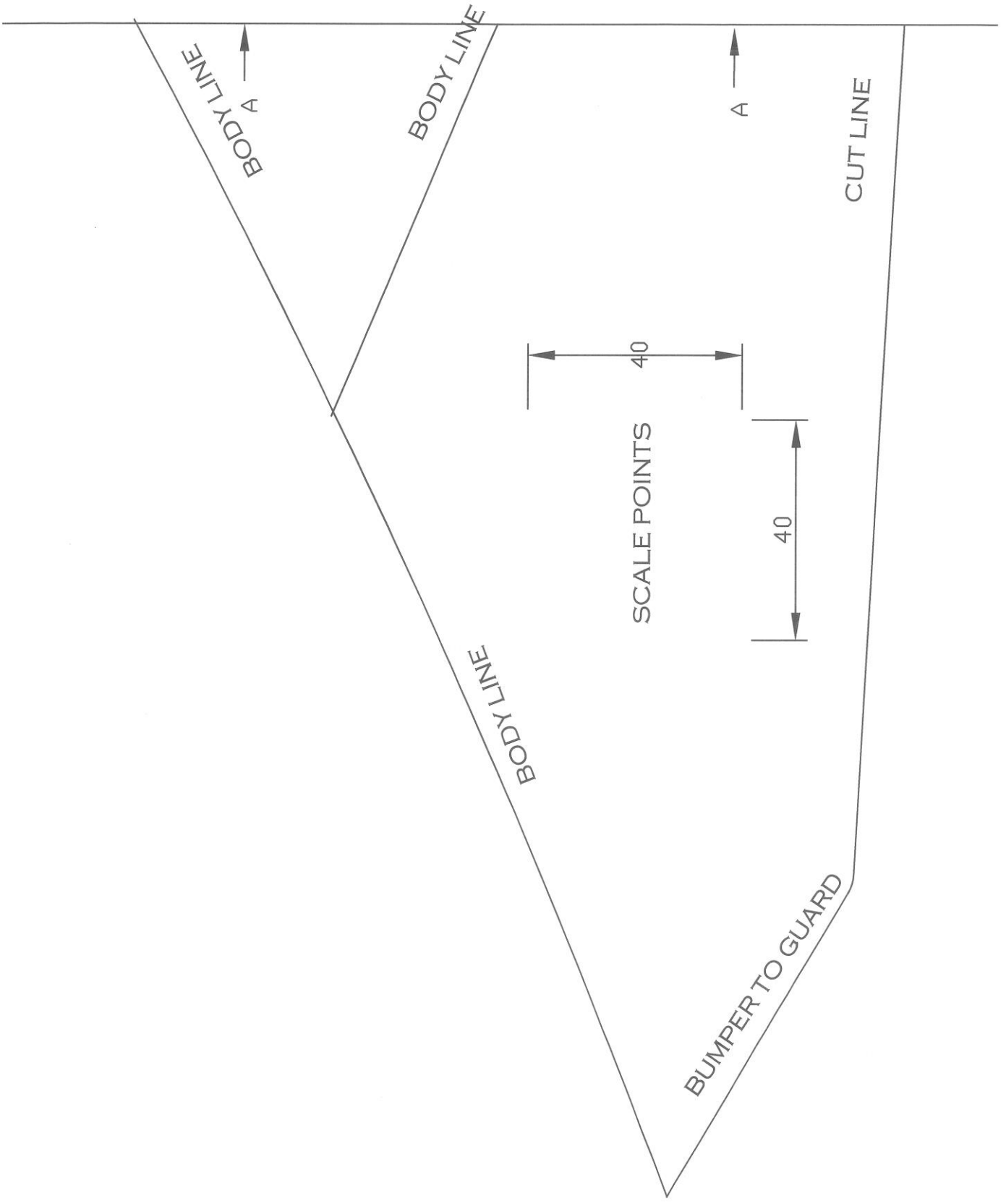
Tel: 07 3897 5700

Fax: 07 3283 1168

ecb@ecb.com.au www.ecb.com.au

29 Snook St
Clontarf QLD 4019
Australia

Po Box 122
Margate QLD 4019
Australia





**WORLD'S BEST
ALLOY BULLBARS**

East Coast Bullbars (ECB Pty Ltd)

Tel: 07 3897 5700

Fax: 07 3283 1168

ecb@ecb.com.au www.ecb.com.au

29 Snook St
Clontarf QLD 4019
Australia

Po Box 122
Margate QLD 4019
Australia



**WORLD'S BEST
ALLOY BULLBARS**

East Coast Bullbars (ECB Pty Ltd)

Tel: 07 3897 5700

Fax: 07 3283 1168

ecb@ecb.com.au www.ecb.com.au

29 Snook St
Clontarf QLD 4019
Australia

Po Box 122
Margate QLD 4019
Australia

We value your comments

Dear Fitter,

ECB would like to know how you went with the installation of this product. We value your comment and may need to contact you to clarify some details so please complete your contact details clearly.

We would appreciate if you could complete as many of the following details as possible.

Your Name:	Your contact No.
Product Part No.	Product Invoice No.
Product Description:	Make, model, and year of vehicle:
Product Work Order No.	Company your from/Company product purchased from:

Date of Fitment: ____/____/____

Was the fitting hardware supplied complete?

Yes

No

If no what was not supplied

Did the installation go well?

Yes

No

Please provide comments

Please draw diagrams if you need to.

Post to
Reply Paid 122
PO Box 122
Margate QLD 4019

Fax to
(07) 3283 1168



**WORLD'S BEST
ALLOY BULLBARS**

East Coast Bullbars (ECB Pty Ltd)

Tel: 07 3897 5700

Fax: 07 3283 1168

ecb@ecb.com.au www.ecb.com.au

29 Snook St
Clontarf QLD 4019
Australia

Po Box 122
Margate QLD 4019
Australia



WORLD'S BEST
ALLOY BULLBARS

East Coast Bullbars (ECB Pty Ltd)

Tel: 07 3897 5700

Fax: 07 3283 1168

ecb@ecb.com.au www.ecb.com.au

29 Snook St
Clontarf QLD 4019
Australia

Po Box 122
Margate QLD 4019
Australia

DESPATCH CHECKLIST EAM114SY

Work Order #		See other side of this page for photos of all mounts
Finish:		
Transport:		
Due Date:		

- OC.....1 – Left mounting bracket.
- OC.....1 – Right mounting bracket.
- OC.....1 – Winch Mount
- OC.....1 – Winch Control mount
- OC.....1 – Winch Mount Spacer
- OC.....1 – Pair Under body guards
- BK.....1 – Bolt Kit.
- BK.....1 – LED ECB indicator / park light kit. (ICLED105ECB)
- BK.....1 – Quick Click Kit (IC16MIPAHIPDH)
- BK.....1 – Fog light kit
- BK.....1 – Quick click kit (IC16MIPASPFLECBH)
- BK.....1 – 2500 mm length 6mm clip lock trim
- BK.....2 – 600 mm lengths 6 mm clip lock trim
- BK.....2 – 400 mm lengths 3mm clip lock trim
- OC.....2 – ECB Overrides – **Fitted to Bar**
- OC.....4 – 6mm Air Vents – **Fitted to Bar**

_____/_____
Wrapper's initials / Checker initials



Is this product "the best it can be" Yes
If **NO** fix before continuing

All parts checked and completed by:

Nut and bolts: _____ Date __/__/__

Order control: _____ Date __/__/__

Final wrap check: _____ Date __/__/__



East Coast Bullbars (ECB Pty Ltd)

Tel: 07 3897 5700

Fax: 07 3283 1168

ecb@ecb.com.au www.ecb.com.au

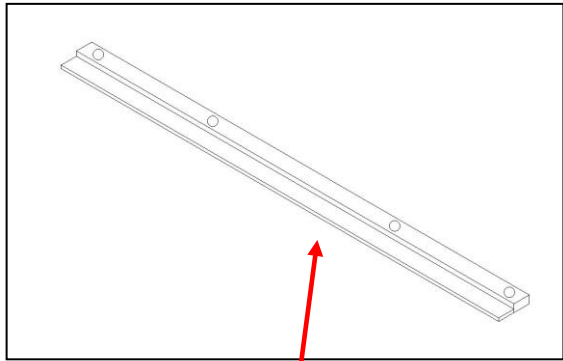
WORLD'S BEST ALLOY BULLBARS

29 Snook St
Clontarf QLD 4019
Australia

Po Box 122
Margate QLD 4019
Australia

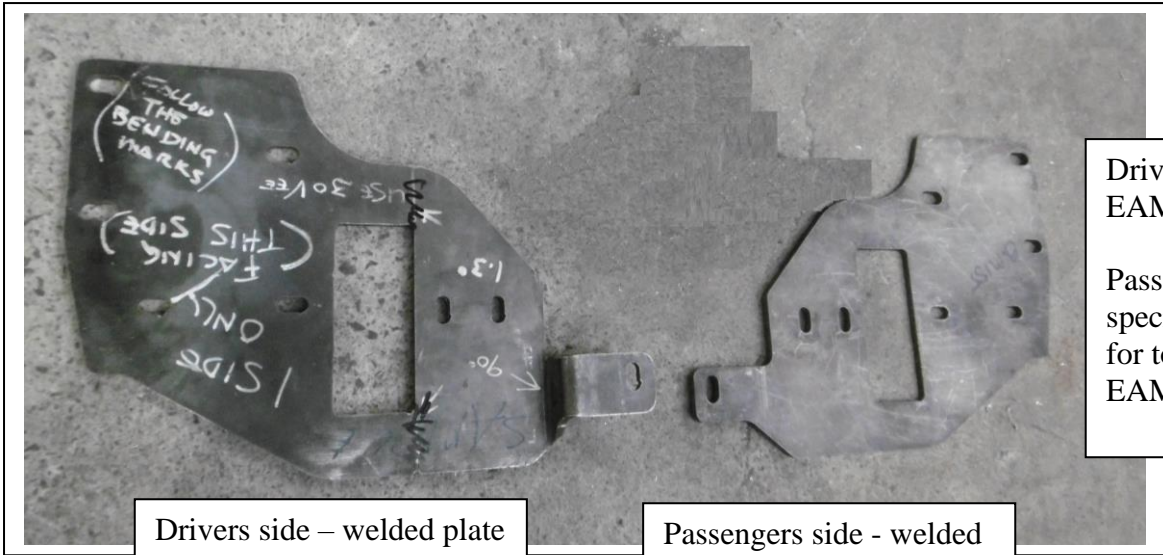


Winch cradle same as EAM158SY



10mm + 4mm flat top winch spacer plate

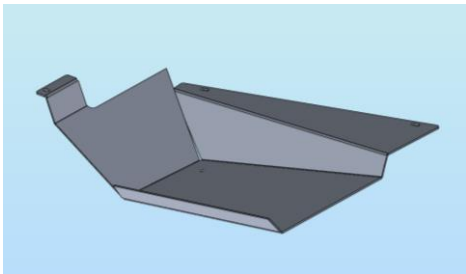
Control box mount same as EAM158SY



Drivers side use EAM156SY mount
Passengers side requires specifically bent mount for tow hook, EAM111SY

Drivers side – welded plate underneath in photo

Passengers side - welded plate underneath in photo



1 pair (opposite folds) of underbelly guards



**WORLD'S BEST
ALLOY BULLBARS**

East Coast Bullbars (ECB Pty Ltd)

Tel: 07 3897 5700

Fax: 07 3283 1168

ecb@ecb.com.au www.ecb.com.au

29 Snook St
Clontarf QLD 4019
Australia

Po Box 122
Margate QLD 4019
Australia

_____/_____
Wrapper's initials / Checker initials