

EVAKOOL®

PLATINUM SERIES

INSTRUCTION MANUAL

FOR MODEL
DC40 DRAWER FRIDGE/
FREEZER



CHILLED FOR GOOD TIMES

Please read operating manual carefully before using your unit.

Please keep manual in a safe place.

If lost find a digital copy at Evakool.com.au or contact Evakool on 1300 385 665 (1300 EVKOOL).

Contents

1	Safety Instructions	4
2	Notes On Using The Product	4
3	Operation	4
4	Cleaning & Maintenance	6
5	Troubleshooting	6
6	Installation Instructions	8
7	International Certification Approvals.....	9
8	Dimensions.....	10
9	Parts.....	11
10	Warranty Statement	12

Key Product Features

- Powered by 12 Volt DC Compressor.
- Reliable electronics, high efficiency, low energy consumption.
- Built-in drawer compartment.



1 Safety Instructions

- Warning: Do not use your unit if any cabling is damaged, frayed or exposed.
- Warning: Do not attempt or continue to operate your unit if it is wet.
- When using the unit ensure the circuit being used has a fuse or circuit breaker, recommended size for DC 12 Volt is 15 Amp, DC 24 Volt is 7.5 Amp.
- Make sure the voltage is within the correct range for socket and cable being used.
- Do not place any electrical devices inside the refrigerator as they may be damaged.

2. Notes On Using The Product

- Your unit requires good ventilation, especially around the vents of the refrigerator; allow a gap of at least 100mm around all vents.
- Do not allow a large amount of frost to build up on the inside walls as this may impair cooling. Defrost by turning the unit off, allowing the frost to melt and wiping out the water.
- The lower the ambient temperature, the lower the power usage. In order to maximise efficiency keep the unit in a cool location out of direct sunlight.
- It is recommended to operate the unit on a flat surface, but it will operate at angles up to 30°.

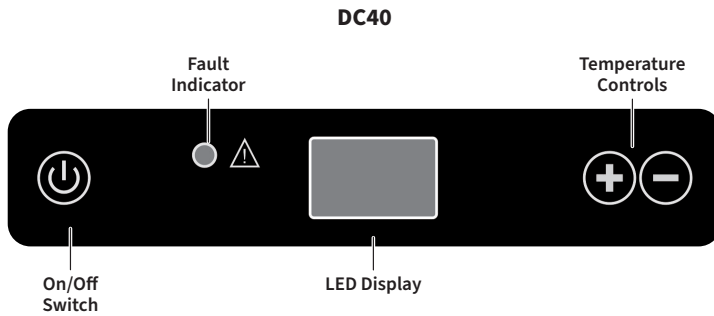
3. Operation

- **Power:** DC (12 and 24 Volt)
- Cable Length Specification

The DC cables must have a suitable cross-section for their length (measured from the battery to the unit), according to this table:

Cable Thickness (Area)		12V Max Cable Length		24V Max Cable Length	
(mm ²)	AWG	(m)	(ft)	(m)	(ft)
2.5	14	2.5	8	5	16
4	12	4	13	8	26
6	10	6	20	12	39
10	8	10	33	20	66

LED Control Panel



Temperature setting range: -16°C to 10°C.

- Plug in the DC power cable.
- Press button to turn on unit. The LED display on the control panel will turn on and the interior temperature is displayed.
- Press the button or button to adjust the temperature the unit aims to achieve. Press the button to increase or the button to decrease the temperature.
- If the power supply is cut off or disconnected, the unit will switch off automatically and once the power supply is restored it will automatically switch back on.

4. Cleaning & Maintenance

- Clean the appliance inside and out with a clean damp cloth every week. If it is dirty, use sodium bicarbonate dissolved in lukewarm water to clean the unit.
- Never use abrasive products, detergents or soap. After cleaning, wipe out with a clean damp cloth and dry carefully.
- Do not store product inside unit if the unit is not on
- Do not store the unit if it is wet inside or without leaving the lid open.
- Never clean the unit under running water or in dish water. Do not use abrasive cleaning agents or hard objects during cleaning as these can damage the unit.

5. Troubleshooting

The Unit is Not Turning On

- Check whether the unit has been turned on.
- Check the power supply (try a different power source/vehicle/socket).
- Check whether the plug and the socket have a good connection.
- Check whether the fuse has been burned out or blown.

Low Refrigeration Performance

- Too much product been placed inside the unit.
- There is too much warm product inside the unit .
- The lid is unlatched / or open.
- The lid seal is broken.
- Problems arising from poor ventilation (allow 100mm of space around all vents).
- The ambient temperature is too high.
- The temperature setting is too high.

Yellow Fault Light Flashing

1 Flash every 4 seconds: Low Voltage

- Try on different power source (vehicle or 240V AC power). If changing power source fixed issue, then possible issue with original power source.
- Ensure cabling between fridge and battery is at least 4mm, if the distance is more than 2 metres then use at least 6mm cable.

2 Flashes every 4 seconds: Fan Issue

- Fan is drawing too many amps (over 0.5 amps), replace fan.

3 Flash every 4 seconds: Compressor Start Issue

- Unplug cable and allow unit to rest for 10 minutes.
- Try on different power source (vehicle or 240V AC power).
- Electronic box fault.
- Compressor fault.

4 Flash every 4 seconds: Low Motor Speed

- Reduce products / items inside unit.
- Move so unit is in a lower ambient temperature clean vents / ensure clear air flow over compressor.
- Fan fault.

5 Flash every 4 seconds: Over Temperature

- Ambient temperature too high.
- Clean vents / ensure clear air flow over compressor.
- Fan fault.

Can hear the sound of running water from inside the unit

- This is normal, due to the flow of refrigerant in the unit.

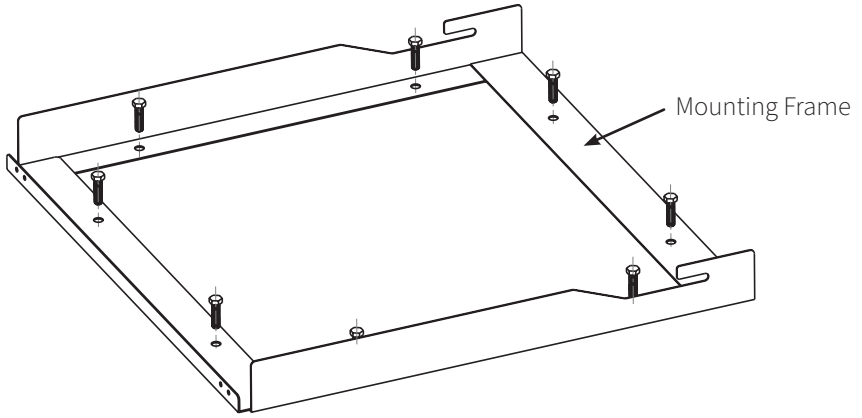
Unusual noise when refrigerator is working

- The refrigerator is not placed on a level surface.

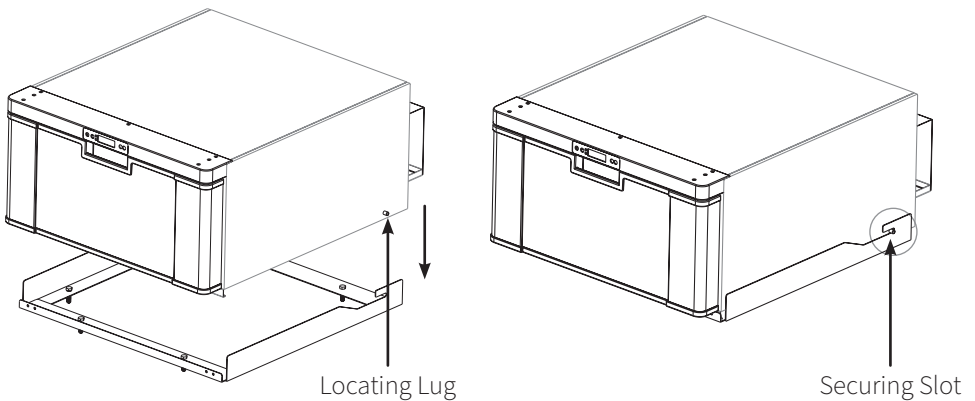
If none of the above solves your issue please contact Evakool on 1300 385 665 or warranty@evakool.com for details of your closest Evakool service centre.

6. Installation Instructions

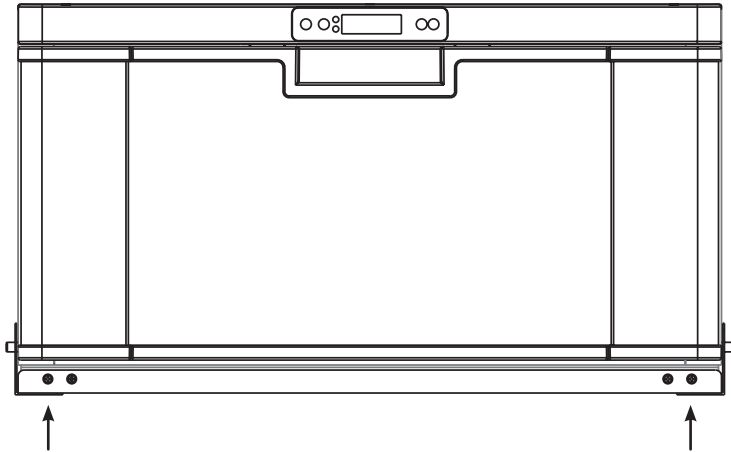
- a. Remove the mounting frame from the fridge.
- b. Locate the mounting frame into the position you wish to install the fridge.
- c. Use the screws provided to fix the mounting frame to the base.



- d. Insert the drawer fridge onto the mounting frame. Ensure the locating lugs are securely inserted into the locating slots.



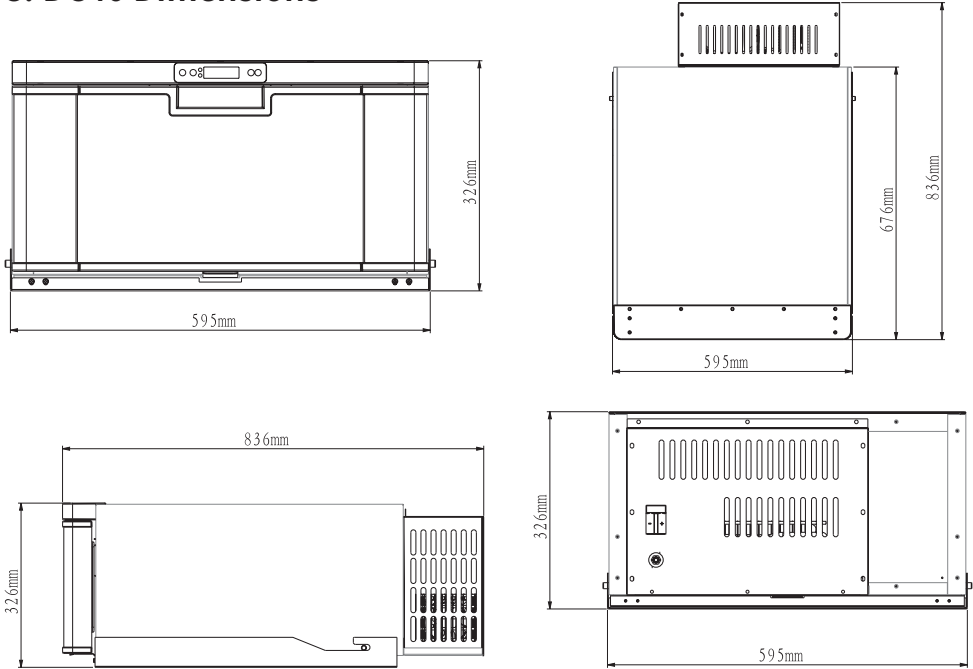
e. Using the 4 screws provided, secure the fridge to the mounting frame as shown below.



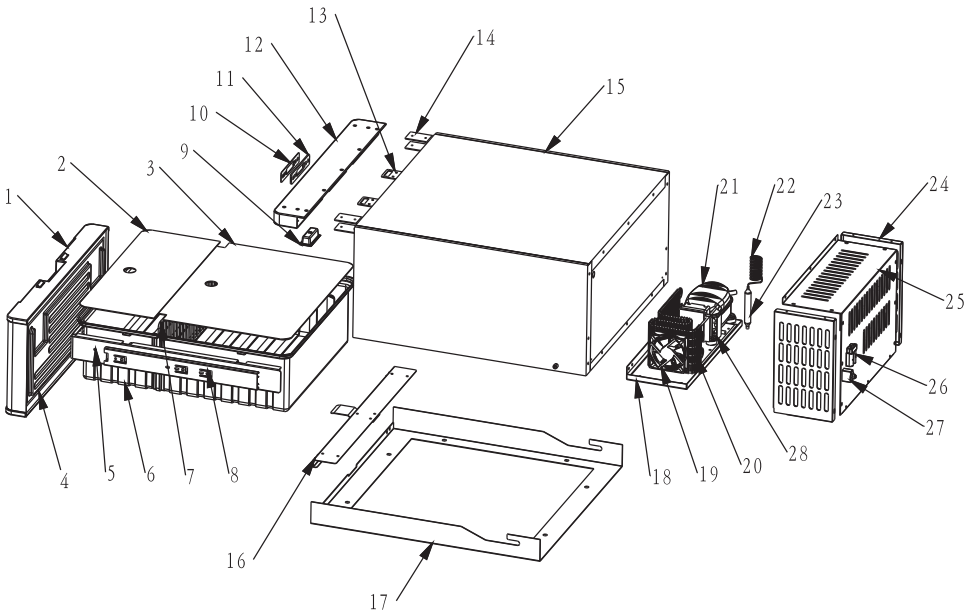
7. International Certification Approvals



8. DC40 Dimensions



9. DC40 Parts



1	DC40DR-ZJ-002	Door	15	DC40DR-ZJ-001	Cabinet
2	DC40DR-SL-01	Acrylic-Front	16	DC40DR-WJ-011A	Fixed Bracket 1
3	DC40DR-SL-010	Acrylic-Rear	17	DC40DR-WJ-022	Fixed Bracket 2
4	DC40DR-SL-005	Door Gasket	18	DC40DR-WJ-003	Compressor Base Board
5	DC40DR-WJ-004A	Cabinet Bracket	19	DQ-02	Fan
6	DC40DR-SL-006	Cabinet	20	DC40DR-WJ-037	Condenser
7	DC40DR-WJ-035	Shelf	21	DQ-236	Compressor
8	DC40DR-SJ-030	Track	22	WJ-029	Capillary
9	DC25-DQ-001	LED Light	23	T-WJ-001	Dryer
10	XF-186	Display Sticker	24	DC40DR-WJ-019A	Left & Right Cover Board
11	DC40R-DQ-002	Display Board	25	DC40DR-WJ-024	Rear Cover Board
12	DC40DR-SL-002A	Top Plastic Cover	26	KC-DQ-005	50A Plug
13	DC40DR-WJ-032	Door Lock Panel	27	66.20-B1B1-B0139	Circuit Breaker
14	DC40DR-WJ-023	Metal Bracket for Top Cover	28	DC35T-DQ-001	Main PCB

10. Warranty Statement/Terms & Conditions

Nexberg Pty Ltd trading as EvaKool undertakes to the original purchaser that this product is sold free of defect in materials and/or workmanship under normal use for a period of **24 months**. Subject to the following:

- The warranty period commences from the date of purchase by the original purchaser from an authorised EvaKool dealer.
- The Secop compressor in this unit carries a 5 year warranty under normal use.
- EvaKool will honour this warranty on presentation of proof of purchase of the unit to EvaKool or its approved service agent. The service agent may be requested to provide EvaKool with a photocopy of the proof prior to warranty being honoured.
- EvaKool will not be held responsible for any costs incurred in making a warranty claim.
- Please telephone 1300 865 665 for the name of an authorised service agent or refer to list provided on website. It is the purchaser's responsibility to freight the unit to and from the service agent.
- EvaKool will not be held responsible for any damage or loss suffered or cost incurred whilst fridge is in transit.
- Warranty repairs may only be carried out by an authorised service agent. EvaKool will not reimburse repair claims carried out by unauthorised service agents. Any unauthorised tampering with any part of the unit will automatically void the warranty.
- Service agents may charge a fee for viewing or testing the unit. This is not covered by EvaKool or this warranty and is payable at the service point unless authorised by EvaKool.
- Any EvaKool authorised service centre in Australia will be able to carry out the service of your unit. If a repair needs to be undertaken and is covered in terms of this warranty a warranty authorisation number must be obtained prior to commencement of any work.
- This warranty does not extend to any products acquired for the purposes of re-supply, to be used up or transformed in a production or manufacture process or in repairing other goods.
- This fridge is intended for recreational use only. If used for commercial use, a 12 month warranty applies.
- To the extent permitted by law, this warranty does not extend to any claim for damages that you or any other person may have for any loss (including without limitation consequential damages or loss of profit) or damage howsoever caused.
- **EvaKool will not accept a warranty claim if:**
 1. Modifications have been carried out to the unit without EvaKool's written authority.
 2. Damage to or failure of the unit has been caused in EvaKool's opinion by incorrect, extreme or unreasonable use.
 3. Damage to or failure of the unit has been caused in EvaKool's opinion by misuse, neglect, accident, impact or similar cause. Refer the preventative maintenance guidelines.
- EvaKool has total discretion of the variation of the warranty terms.
- Our goods come with guarantees that cannot be excluded under the Australian Consumer Law. You are entitled to a replacement or refund for major failure and for compensation for any other reasonably foreseeable loss or damage. You are also entitled to have the good repaired or replaced if the goods fail to be of acceptable quality and the failure does not amount to a major failure.
- The above warranty conditions are in addition to any other rights and/or remedies as per the applicable law.
- Failure to follow the guidelines/recommendations in this manual may void the warranty.
- This warranty cannot be varied by others.

Please retain your receipt or proof of purchase for warranty purposes.

EVAKOOL®

CHILLED FOR GOOD TIMES

For your nearest stockist contact EvaKool

T: 1300 385 665 (1300 EVKOOL)

E: warranty@evakool.com

or visit us at evakool.com.au