



FITTING INSTRUCTIONS

Product:

Modular Sidebar Steps

Vehicle:

Toyota LandCruiser 70 Series Cab Chassis

Part No.

735SBSSA69G

Australian Standards Relating to Installing Vehicle Frontal Protection Systems (VFPS): AS 4876.1-2002

- Do not attach V.F.P.S. to vehicle using anchorages not intended for this purpose (e.g. engine mounting bolts), other than those specified by the V.F.P.S. manufacturer in this instruction.
- Do not use this product for any vehicle make or model other than those specified by the V.F.P.S. manufacturer (as above).
- Do not remove any plaques or labels from the V.F.P.S.
- Do not modify the structure of the V.F.P.S. in any way.

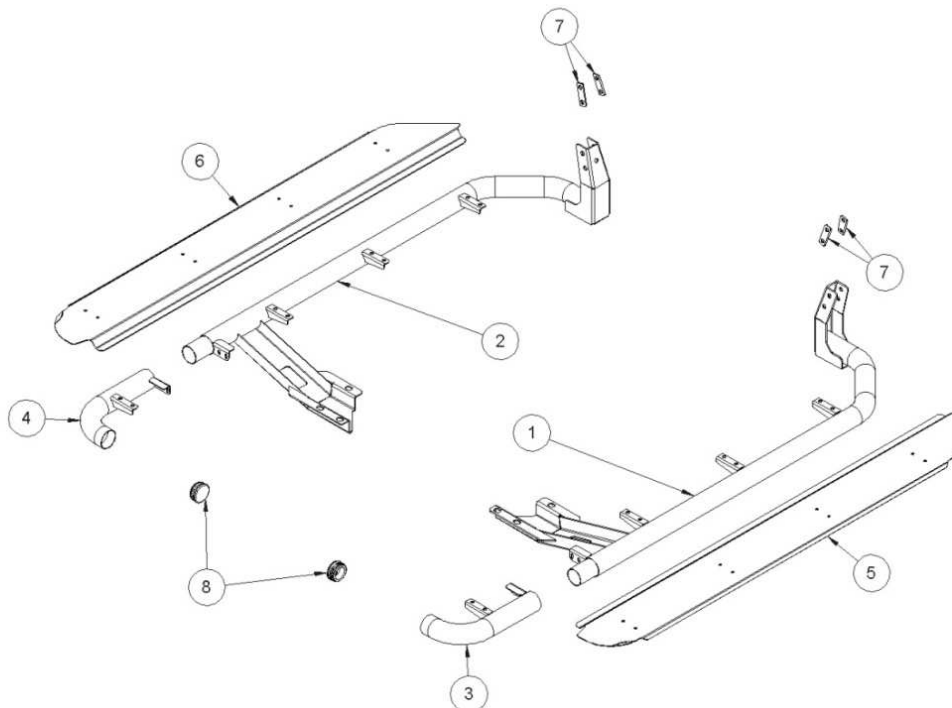
Warranty

- If any product or part of a product manufactured by TJM is found to be defective during a period of three (3) years after the date of purchase, TJM shall repair (at TJM's discretion) the defective product or part.
- Any defect in a product distributed by TJM, but not manufactured by TJM, shall be dealt with in accordance with, and to the extent of, the warranty offered by the manufacturer of that product.
- TJM does not warranty that the products manufactured by it comply with the laws of the place where those product are purchased or used. It is the sole responsibility of the purchaser to ascertain whether products being purchased, or the affixation of those products to any other object, comply with local laws.
- Except to the extent described in this warranty, TJM shall not be liable for any other claims, including claims arising from incorrect fitment, product or vehicle modification, faulty design, the use of the product on any indirect special or consequential damage or injury to any person, company or other entity.
- Modification or alteration to any product manufactured by TJM to enable fitment in conjunction with other vehicle accessories or modifications (e.g. lift kits) will void any warranty claims.

Read instructions fully before commencing fitment.

Left hand & Right hand components are determined as seated in the vehicle.

Bolt tensions	Dia. (mm)	Nm	ft.lbs	Dia. (inch)	Nm	ft.lbs
All bolt tensions are as follows unless otherwise specified.	5	5	4	1/4"	9	7
	6	9	7	5/16"	22	15
	8	22	16	3/8"	33	27
	10	44	32	7/16"	55	43
	12	77	57	1/2"	86	66



For further information contact T.J.M. Head Office on (07) 3865 9999. Distributors Australia wide.



FITTING INSTRUCTIONS

Product:

Modular Sidebar Steps

Vehicle:

Toyota LandCruiser 70 Series Cab Chassis

Part No.

735SBSSA69G

Item No.	Description	Qty	Part Number
PARTS LIST			
1	Sidebar Step LH	1	88957L
2	Sidebar Step RH	1	88957R
3	Sidebar Step End LH	1	88960L
4	Sidebar Step End RH	1	88960R
5	Sidebar Step Tread LH	1	88953L
6	Sidebar Step Tread RH	1	88953R

ACCESSORY KIT			
N/A	Foam Tape (1600mm)	2	K1361
8	End Cap Plug (63mm)	2	92319

BOLT KIT			
N/A	M8 x 1.25 x 20mm Stainless Dome Head Screw	16	K1284
N/A	M8 x 1.25 x 25mm Stainless Dome Head Screw	4	K2084
N/A	M8 x 1.25 Flange Nut	20	K3035
N/A	M8 Flat Washer	4	K0628
N/A	M10 x 1.25 x 30mm Hex Head Bolt	8	K0564
N/A	M10 x 1.25 x 35mm Hex Head Bolt	6	K0565
N/A	M10 x 1.25 Nyloc Nut	8	K3099
N/A	M10 Spring Washer	6	K0621
N/A	M10 x 30mmOD Flat Washer	14	WSST-W13
7	Washer Plate	4	89243



1. Remove (& discard) the two front fasteners & the outside rear fastener from the gearbox cross-member.
Ensure that the rear inside fastener is still in place.
2. Lift the sidebar step into position, aligning the slots in the sidebar step front mount with the captive nuts made available in Step 1 (as shown), then loosely secure through the sidebar step front mount & into the captive nuts using M10 x 1.25 x 35mm hex bolts (3), M10 x 30mm flat washers (3) & M10 spring washers (3).

For further information contact T.J.M. Head Office on (07) 3865 9999. Distributors Australia wide.



FITTING INSTRUCTIONS

Product:

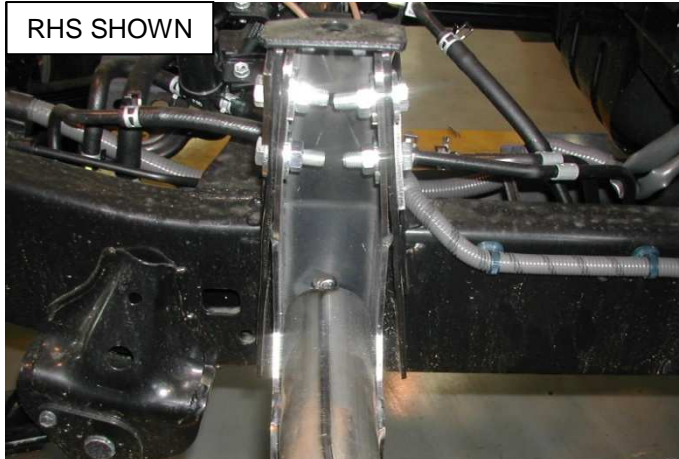
Modular Sidebar Steps

Vehicle:

Toyota LandCruiser 70 Series Cab Chassis

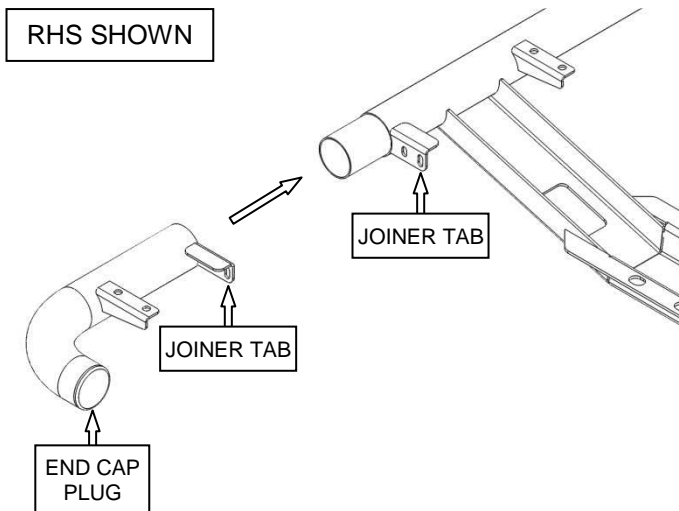
Part No.

735SBSSA69G



The sidebar step rear mount should fit into position as shown.

- Secure the sidebar step rear mount through the O.E. chassis rail mount, using M10 x 1.25 x 30mm hex bolts (4), M10 x 30mm flat washers (4), M10 nyloc nuts (4) & washer plates (2).



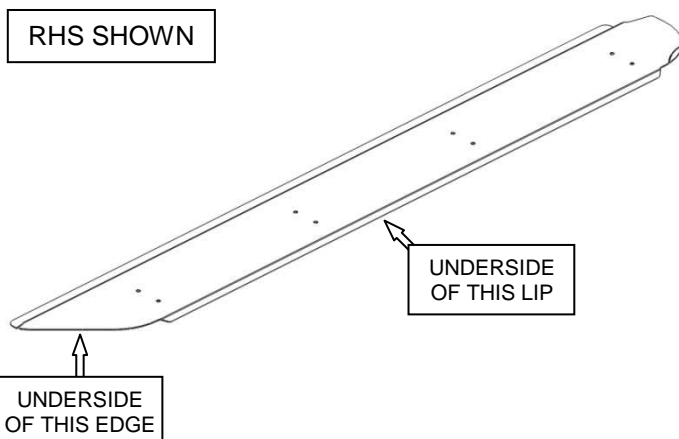
- Place an end cap plug in the sidebar step end (as shown), then slide the sidebar step end onto the sidebar step sleeve & align the joiner tabs.

The end cap plug may need to be tapped in using a rubber mallet.

- Secure the sidebar step end to the sidebar step through the joiner tabs, using M8 x 1.25 x 25mm stainless dome bolts (2), M8 flat washers (2) & M8 flange nuts (2).

These fasteners also align the two sections of the sidebar step together.

- Align the sidebar step end to the vehicle, then tighten all of the previously installed fasteners to the appropriate torque settings.



- Peel the backing off the foam tape & position it on the underside of the tread plate lip & along the rear edge.
- Place the tread plate in position on the sidebar step, aligning the fastening holes with the sidebar step tabs, then secure it in place using M8 x 1.25 x 20mm stainless dome bolts (8) & M8 flange nuts (8).
- Tighten the tread plate fasteners to the appropriate torque settings.
- Repeat Steps 1 through to 9 for the opposite side.
- Ensure that all fasteners are tightened to the appropriate torque settings & that, as a result of fitting the sidebar step, no vehicle components are crushed or will chafe.

For further information contact T.J.M. Head Office on (07) 3865 9999. Distributors Australia wide.