



FITTING INSTRUCTIONS

Product: Outback & Fleet Frontal Protection System

Vehicle: Toyota Hilux 05+

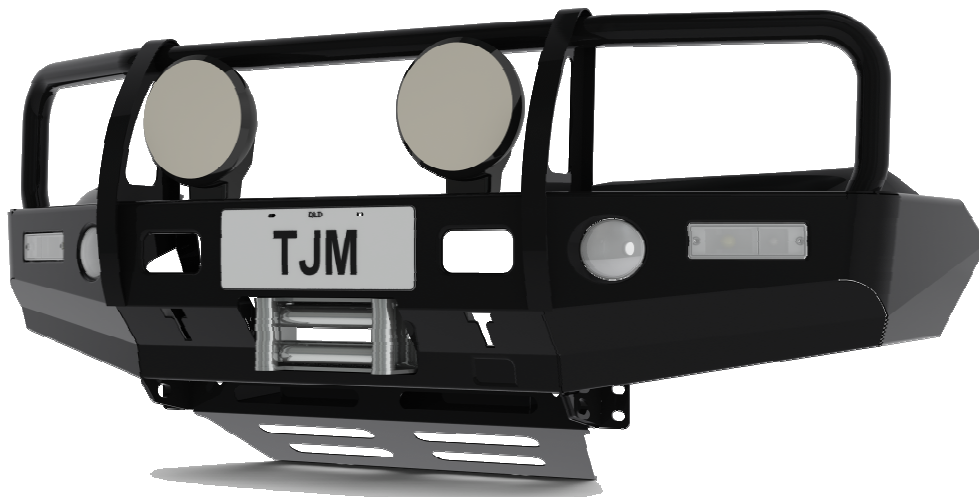
Part No. 070SB13N87A 070SB15F87A 070SB15N87A CKDSR15G87A 070SB15T87A

Australian Standards Relating to Installing Vehicle Frontal Protection Systems (VFPS): AS 4876.1-2002

- a) Do not attach V.F.P.S. to vehicle using anchorages not intended for this purpose (e.g. engine mounting bolts), other than those specified by the V.F.P.S. manufacturer in this instruction.
- b) Do not use this product for any vehicle make or model other than those specified by the V.F.P.S. manufacturer (as above).
- c) Do not remove any plaques or labels from the V.F.P.S.
- d) Do not modify the structure of the V.F.P.S. in any way.

Warranty

1. If any product or part of a product manufactured by TJM is found to be defective during a period of three (3) years after the date of purchase, TJM shall repair (at TJM's discretion) the defective product or part.
2. Any defect in a product distributed by TJM, but not manufactured by TJM, shall be dealt with in accordance with, and to the extent of, the warranty offered by the manufacturer of that product.
3. TJM does not warrant that the products manufactured by it comply with the laws of the place where those products are purchased or used. It is the sole responsibility of the purchaser to ascertain whether products being purchased, or the affixation of those products to any other object, comply with local laws.
4. Except to the extent described in this warranty, TJM shall not be liable for any other claims, including claims arising from incorrect fitment, product or vehicle modification, faulty design, the use of the product on any indirect special or consequential damage or injury to any person, company or other entity.
5. Modification or alteration to any product manufactured by TJM to enable fitment in conjunction with other vehicle accessories or modifications (e.g. lift kits) will void any warranty claims.



For further information contact T.J.M. Head Office on (07) 3865 9999. Distributors Australia wide.



FITTING INSTRUCTIONS

Product:	Outback & Fleet Frontal Protection System
Vehicle:	Toyota Hilux 05+
Part No.	070SB13N87A 070SB15F87A 070SB15N87A CKDSR15G87A 070SB15T87A

Bolt tensions	Dia. (mm)	Nm	ft.lbs	Dia. (inch)	Nm	ft.lbs
All bolt tensions are as follows unless otherwise specified.	5	5	4	1/4"	9	7
	6	9	7	5/16"	22	15
	8	22	16	3/8"	33	27
	10	44	32	7/16"	55	43
	12	77	57	1/2"	86	66

BOLT KIT		
T13 Quantity	Description	T15 Quantity
2	M12x1.25x35mm Bolt – K0570	2
2	M12 Flat washer – K0425	2
2	M12 Spring washer – K0977	2
6	M10x1.25x35mm Bolt – K0565	6
10	M10 Flat washers – K2900	10
6	M10 Spring washers – K0621	6
6	M10x1.25 Hex nut – K0579	6
2	M8x1.25x16mm Bolt – K0767	2
4	M8 Flat washers – K0628	4
2	M8x1.25 Nyloc nuts – K0606	2
8	M5 x 15mm OD Flat Washer	8
8	M5 Spring Washer	8
4	M6x1.0x16mm Button head screw - K1630	0
16	M6x1.0x16mm Hex head bolt – K1232	8
14	M6x1.0 Flange nuts – K3033	6
20	1/4" x 3/4" Flat washers – K2905	8
8	10g U-Nut – K2078	8
6	M6 Spring washer – K0915	2
6	Nylon plug – K0665	6
10	Screw 10g x 3/4" - K0763	10
2	Washer plate – 87976	2
2	Fog light washer plate – 88057	0
2	Fog light assembly bracket – 87706	0
6	Scotch lock – K0419	6

ACCESSORY KIT		
T13 Quantity	Description	T15 Quantity
2	Shim plate A – 88358	2
2	Shim plate B – 88359	2
2	Shim plate C – 88360	2
1	Fog light kit – 92102	0
1	Fog-light switch – 92272	0
1	Headlight trim LH – 92098L	1
1	Headlight trim RH – 92098R	1
1	Indicator/park lamp kit LH – 90372	1
1	Indicator/park lamp kit RH – 90373	1
1	Chassis support LH – 87669L	1
1	Chassis support RH – 87669R	1
1	Winch cover plate T13 – 87704	0
0	Winch cover plate T15 – 87975	1
1	Front under guard – 87972	1
1	Inner guard support LH – MTST-T378	1
1	Inner guard support RH – MTST-T377	1
1	Grille support bracket – 88058	1

For further information contact T.J.M. Head Office on (07) 3865 9999. Distributors Australia wide.



FITTING INSTRUCTIONS

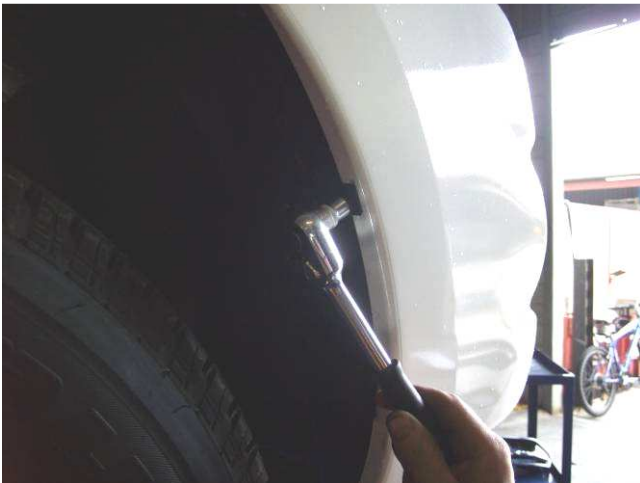
Product: Outback & Fleet Frontal Protection System

Vehicle: Toyota Hilux 05+

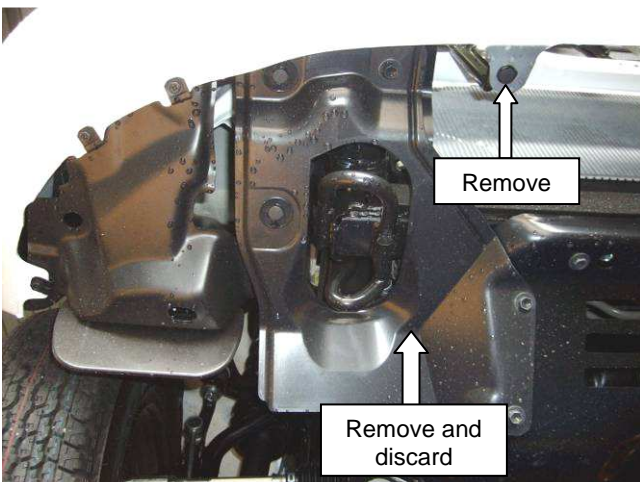
Part No. 070SB13N87A 070SB15F87A 070SB15N87A CKDSR15G87A 070SB15T87A



1. Open the bonnet and remove the two plastic clips and the two screws retaining the top of the grille. From the inside, carefully disengage the clips at the bottom of the grille and remove.



2. Remove the bolts that connect the inner guard to the bumper.



3. Remove the plastic trim from the front stone guard and discard. Remove the plastic clips at the bottom of the bumper.

For further information contact T.J.M. Head Office on (07) 3865 9999. Distributors Australia wide.



FITTING INSTRUCTIONS

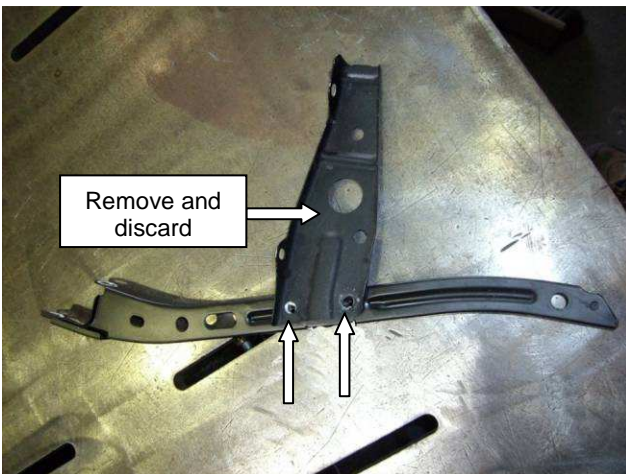
Product: Outback & Fleet Frontal Protection System

Vehicle: Toyota Hilux 05+

Part No. 070SB13N87A 070SB15F87A 070SB15N87A CKDSR15G87A 070SB15T87A



4. Remove the bumper from the vehicle. Remove and discard the two metal bumper support brackets.
5. Remove the front intrusion beam and retain the four M10 nuts.



6. Remove the center grille support. Drill out the two spot welds and discard the grille support as shown.



7. Remove the headlights.

For further information contact T.J.M. Head Office on (07) 3865 9999. Distributors Australia wide.

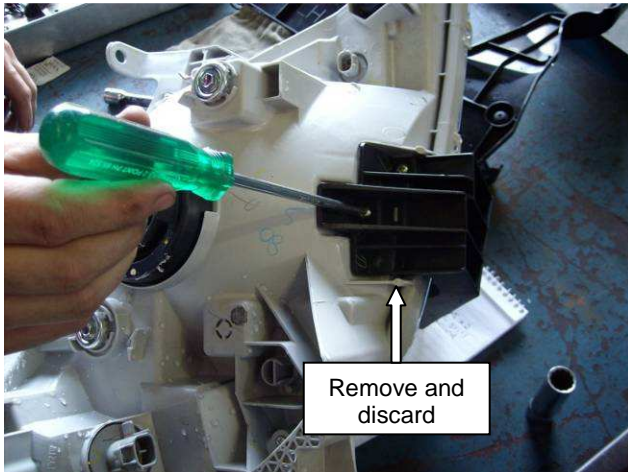


FITTING INSTRUCTIONS

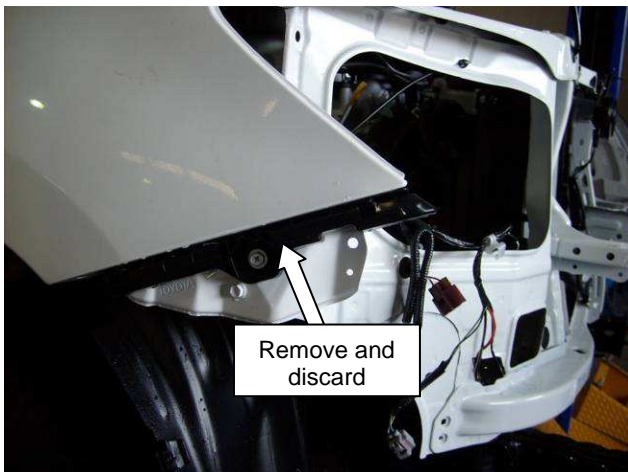
Product: Outback & Fleet Frontal Protection System

Vehicle: Toyota Hilux 05+

Part No. 070SB13N87A 070SB15F87A 070SB15N87A CKDSR15G87A 070SB15T87A



8. Remove and discard the bumper support clips at the bottom of the headlights.



9. Remove and discard the bumper clips on both side front guards. While the headlights are removed, connect the wiring for the front combination lamps to the vehicles indicator and park light wiring using the scotch locks provided.



10. For aesthetics, this section may be painted black to conceal the gap necessary for correct bull bar positioning. If so, mask the surrounding area and clean the area to be painted with wax and grease remover.
11. Re-fit the headlights.

For further information contact T.J.M. Head Office on (07) 3865 9999. Distributors Australia wide.

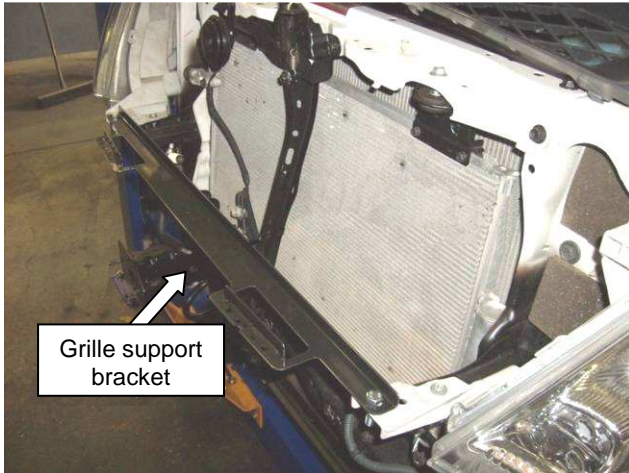


FITTING INSTRUCTIONS

Product: Outback & Fleet Frontal Protection System

Vehicle: Toyota Hilux 05+

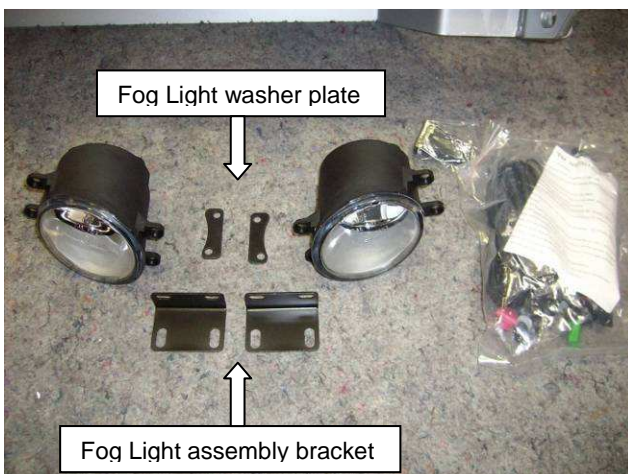
Part No. 070SB13N87A 070SB15F87A 070SB15N87A CKDSR15G87A 070SB15T87A



12. Attach the lower grille support bracket supplied, as shown, using two M8 x 16mm bolts, four M8 flat washers and two M8 Nyloc nuts.



13. Insert nylon plugs supplied into the holes for the indicators and the holes in the front face of the bar for the number plate.



NOTE: If fitting a T15 style bar, proceed to step 19.

14. Check that all parts for fog light installation have been supplied.

For further information contact T.J.M. Head Office on (07) 3865 9999. Distributors Australia wide.



FITTING INSTRUCTIONS

Product: Outback & Fleet Frontal Protection System

Vehicle: Toyota Hilux 05+

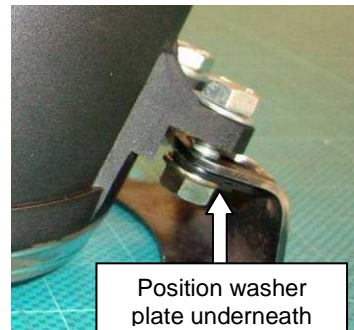
Part No. 070SB13N87A 070SB15F87A 070SB15N87A CKDSR15G87A 070SB15T87A



15. Attach the fog light assembly bracket to the fog lights using two M6 x 16mm hex bolts, $\frac{1}{4}$ x $\frac{3}{4}$ flat washers and M6 flange nuts as shown.



16. Attach the fog light to the bar using two M6 x 16mm hex bolts, $\frac{1}{4}$ x $\frac{3}{4}$ flat washers and M6 flange nuts and one fog light washer plate as shown. Repeat for the other side.



17. Using two M6 x 16mm button head screws, two $\frac{1}{4}$ x $\frac{3}{4}$ flat washers and two M6 spring washers attach the adjustable side to the bull bar. Access the button head screws through the holes in the center section of the bull bar.

For further information contact T.J.M. Head Office on (07) 3865 9999. Distributors Australia wide.



FITTING INSTRUCTIONS

Product: Outback & Fleet Frontal Protection System

Vehicle: Toyota Hilux 05+

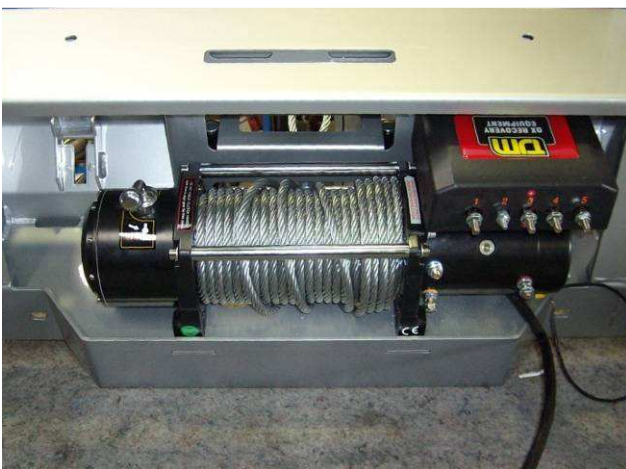
Part No. 070SB13N87A 070SB15F87A 070SB15N87A CKDSR15G87A 070SB15T87A



18. Adjust the fog lights so they are positioned in the center of the pressing and are projecting forward.
19. Fit the combination lamps to the bar using the screws provided with the indicators.



20. Fit the headlight trim to the bar using four 10g x 3/4" screws, flat washers, spring washers and U-nut. Repeat for the opposite side.



21. If a winch is to be fitted, fit it now following the instructions supplied with the winch.

For further information contact T.J.M. Head Office on (07) 3865 9999. Distributors Australia wide.



FITTING INSTRUCTIONS

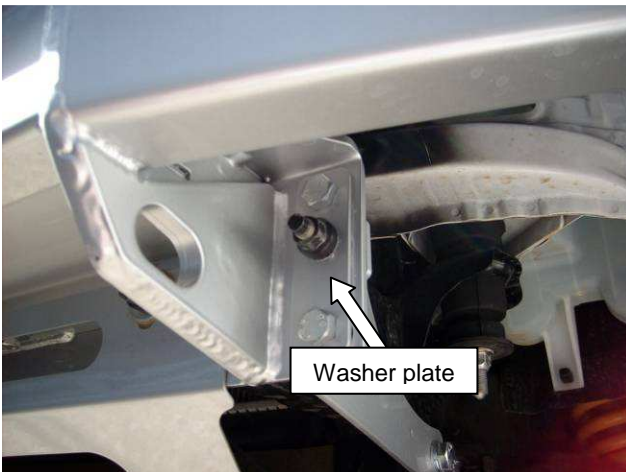
Product: Outback & Fleet Frontal Protection System

Vehicle: Toyota Hilux 05+

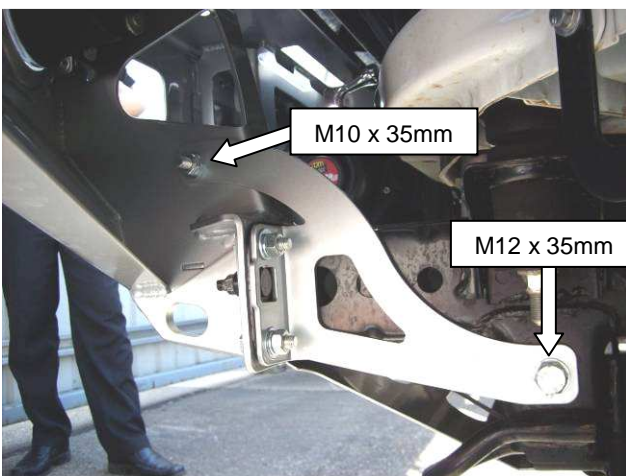
Part No. 070SB13N87A 070SB15F87A 070SB15N87A CKDSR15G87A 070SB15T87A



22. If there is to be no winch fitted, fit the winch cover plate to the front of the bar using two M6 x 16mm hex bolts, two 1/4 x 3/4 flat washers and two M6 flange nuts.



23. With the assistance of another person, carefully lift the bar into position. Attach the bar to the chassis using the washer plate and two of the M10 nuts removed from the intrusion beam. Do not tighten.



24. Firstly, attach the chassis support bracket to the vehicle using a M12 x 35mm bolt, M12 flat washer and M12 spring washer to the chassis end. Secondly, attach to the bar using a M10 x 35mm bolt, two M10 flat washers, M10 spring washer and M10 hex. Finally, using two M10 x 35mm bolts, two M10 flat washers, spring washers and M10 hex nuts, secure the bracket to the chassis flange. Do not tighten. Repeat for opposite side.

For further information contact T.J.M. Head Office on (07) 3865 9999. Distributors Australia wide.

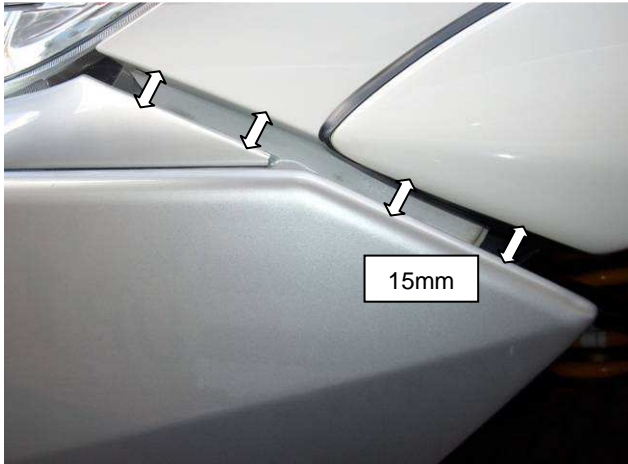


FITTING INSTRUCTIONS

Product: Outback & Fleet Frontal Protection System

Vehicle: Toyota Hilux 05+

Part No. 070SB13N87A 070SB15F87A 070SB15N87A CKDSR15G87A 070SB15T87A



25. Align the bar so that it sits evenly and level. The minimum gap between the flare and the bar is 15mm. Once satisfied, tighten all bolts.



NOTE: It may be necessary to position a combination of the supplied shims between the end of the chassis rail and the bar mount, to achieve the required bar position.



26. If needed, loosen the screws attaching the headlight trim to the bull bar and position the trim so that an even gap is achieved under the headlight. Re-tighten.

For further information contact T.J.M. Head Office on (07) 3865 9999. Distributors Australia wide.

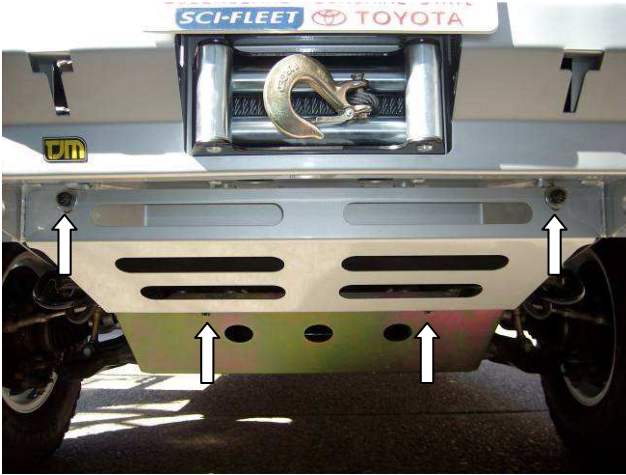


FITTING INSTRUCTIONS

Product: Outback & Fleet Frontal Protection System

Vehicle: Toyota Hilux 05+

Part No. 070SB13N87A 070SB15F87A 070SB15N87A CKDSR15G87A 070SB15T87A



27. To fit the guard to the vehicle, first remove the two bolts that retain the original stone tray. At the top, attach the guard to the two inner studs from the chassis flange. At the bottom, place the guard over the original stone tray and re-insert the original bolts. Using the two remaining M10 nuts from the front intrusion beam and two M10 flat washers secure the guard in place. Tighten all bolts.



28. Attach the inner guard supports to the vehicle using a M6 x 16mm bolt, $\frac{1}{4}$ x $\frac{3}{4}$ flat washer and M6 spring washer.

29. Drill two 6mm holes through the inner guard using the bracket as a template. Attach the bracket to the inner guard using two M6 x 16mm bolts, $\frac{1}{4}$ x $\frac{3}{4}$ flat washers, and M6 flange nuts. Trim the inner guard to suit.

Repeat for the opposite side.



30. Attach the vehicles number plate to the bar using the two 10g x $\frac{3}{4}$ " screws.

31. Ensure that all fasteners are tightened to the appropriate tensions and that, as a result of fitting the FPS, no vehicle components are crushed or will chafe.

32. Check the operation of the indicators, park lights, fog lights and winch (if fitted) to ensure that they are functioning correctly.

For further information contact T.J.M. Head Office on (07) 3865 9999. Distributors Australia wide.