



FITTING INSTRUCTIONS

Product:	Airtec Snorkel
Vehicle:	Toyota LandCruiser 200 Series
Part No.	011SAT0182C

- Before commencing installation read instructions carefully, ensure that the air box configuration is as shown in the images and all listed components are supplied.
- Estimated Fitting Time: 2 hours
- Left hand & Right-hand components are determined as seated in the vehicle.
- DO NOT use the Snorkel as a Hand Hold when entering the Vehicle.
- At regular Intervals (particularly when travelling off road) Check the “A” Pillar Bracket & Screws to Ensure they are tight - to avoid potential damage to the Vehicle.
- Always place the product on a soft flat bench or workspace – such as a blanket to prevent damage to components prior to installation to the vehicle.
- When removing protective coatings, ensure all new edges are deburred, clean any swarf from the area and apply rust preventative to exposed surfaces.
- To provide adequate sealing of the snorkel system all joints and openings must be sealed using a neutral cure silicone. If the vehicle has a one way drain valve do not seal it - As water entering through the snorkel head needs to drain. TJM recommend frequent inspections of the valve to confirm that the air box is not retaining water and is free to Drain - Especially after water crossings and Extended Off-road use.
- The fitment of this TJM product does not nullify the OE manufacturer's operating guidelines and/or warnings. Ensure you are familiar with and adhere to the usage instructions specified by the manufacturer in the owner's manual or other official documentation.

PARTS LIST		
DESCRIPTION	QTY	PART No.
Snorkel Body	1	011MB00182C
Intermediate Tube	1	011IP00182A
Intermediate Tube Foam Gasket	1	011IG00182A
Door Pillar Bracket	1	F-10691
Inner Guard Template	1	86734-T1
Outer Guard Template	1	86734-T2
Fitting Instructions	1	F-10756
072 Stainless Hose Clamp	1	K1412

BOLT KIT	
DESCRIPTION	QTY
M8 x 1.25 x 16mm Stainless Hex Bolt	3
M8 x 1.25 x 30mm Stud	4
M8 x 1.25 Nyloc Hex Nut	4
M8 x 3.0 x 2.0 S/S Medium Spring Washer	3
M8 x Ø17mm x 1.2 S/S Flat Washer	3
5/16" x Ø1-1/4" x 16g Flat Washer	4
3/4" x 8G Stainless PK Screw	2
Nylon Plug	2

Bolt tensions	Dia. (mm)	Nm	ft.lbs	Dia. (inch)	Nm	ft.lbs
All bolt tensions are as follows unless otherwise specified.	5	5	4	1/4"	9	7
	6	9	7	5/16"	22	15
	8	22	16	3/8"	33	27
	10	44	32	7/16"	55	43
	12	77	57	1/2"	86	66

For product warranty please refer to our website: www.tjm.com.au



FITTING INSTRUCTIONS

Product:

Airtec Snorkel

Vehicle:

Toyota LandCruiser 200 Series

Part No.

011SAT0182C



1. Cut out the outer guard template and overlay on to the snorkel body to ensure that the hole and stud positions match.
2. Loctite the M8 x 1.25 x 30mm studs (4) into the nutserts in the snorkel body.
3. Disconnect the engine intake and remove the air box, retaining the fasteners.
4. Cover the engine intake pipe with a clean plastic bag or similar so no foreign matter can enter the engine.



5. Remove (& retain) the fasteners (4) that secure the right hand mud flap and remove (& retain) the mud flap.

Note: Turning the wheel full lock to the right will give you more room to work in the wheel arch cavity.

6. Remove (& retain) the fasteners (13) that secure the right hand plastic inner guard (the very front of the inner guard can remain attached). Pull the plastic guard away from the body and let it rest on the wheel.
7. Remove (& discard) the OE intake assembly and fasteners (3).



8. Remove (& retain) the intake assembly adaptor from the inner guard.

For product warranty please refer to our website: www.tjm.com.au



FITTING INSTRUCTIONS

Product:

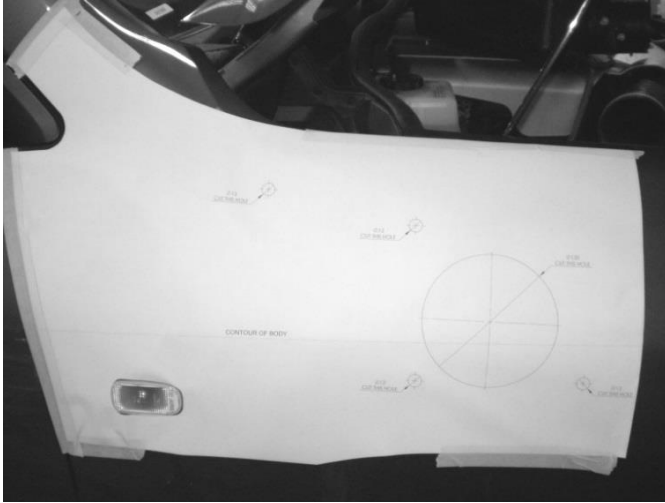
Airtec Snorkel

Vehicle:

Toyota LandCruiser 200 Series

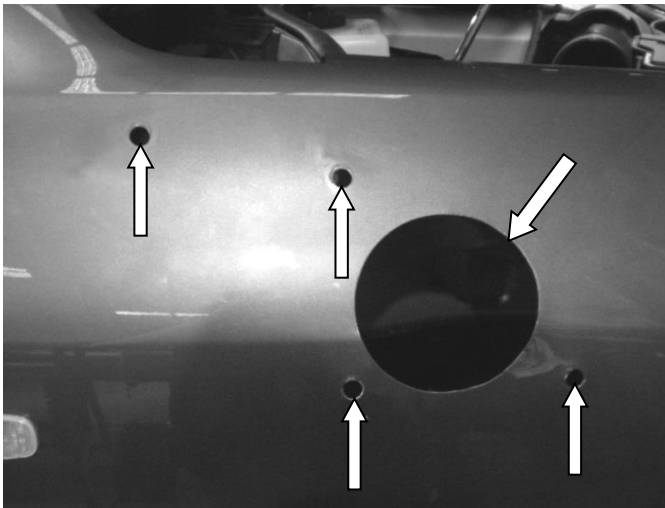
Part No.

011SAT0182C

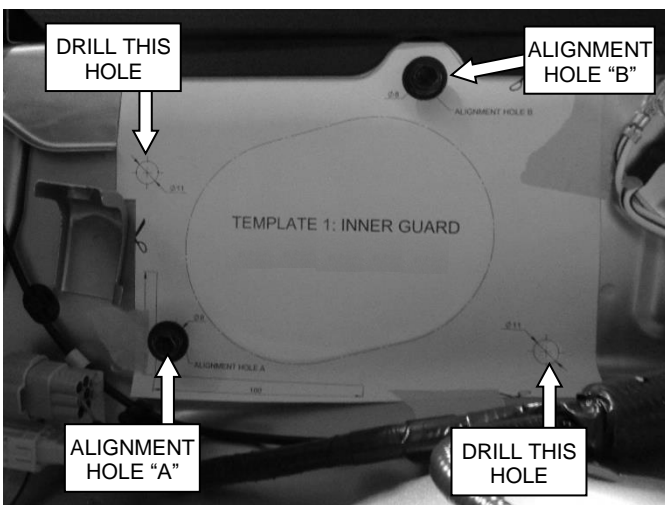


9. Align the outer guard template with the top and rear outer edges of the right hand front guard. Once aligned, secure the template in place using masking tape.

Ensure the template follows the contour of the guard.



10. Use a center punch to mark the positions of the 5 holes to be drilled.
11. Drill 3mm pilot holes at the center punched positions.
12. Drill the stud pilot holes to 14mm.
Tip: use a step drill
13. Drill the snorkel inlet hole to 120mm using a hole saw.



14. Using the intake assembly adaptor bolt holes for alignment, place the inner guard template in position.
15. Use a center punch to mark the positions of the holes to be drilled and then remove the template.
16. Drill 3mm pilot holes at the center punched positions and then drill the holes out to 11mm.
17. De-burr all holes drilled, clean any swarf from the area and apply rust preventative to exposed surfaces.

For product warranty please refer to our website: www.tjm.com.au



FITTING INSTRUCTIONS

Product:

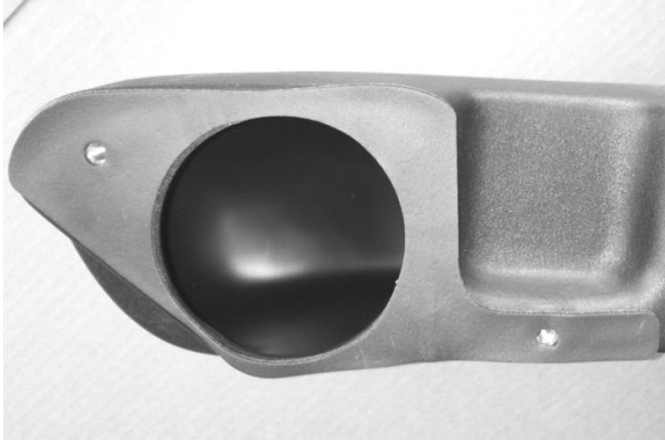
Airtec Snorkel

Vehicle:

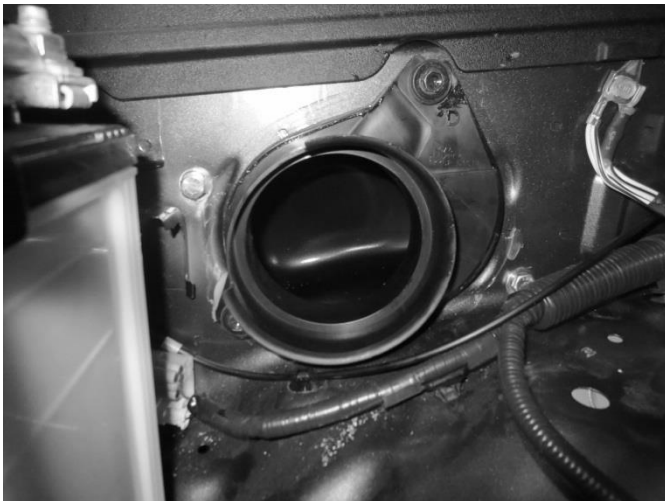
Toyota LandCruiser 200 Series

Part No.

011SAT0182C



18. Peel the backing off the intermediate tube foam gasket, then place on to the intermediate tube as shown.
19. Position the hose clamp on the opposite end of the intermediate tube.
20. Install the intermediate tube in between the outer guard and the inner guard. Finger tightening only, secure the intermediate tube in the OE intake assembly position using M8 x 1.25 x 16mm hex bolts (2), M8 x Ø17mm stainless flat washers (2) and M8 stainless spring washers (2).



21. Refit the intake assembly adaptor to the inner guard and secure it in place using the fasteners retained in step 8.



22. To avoid damaging the vehicle when positioning the snorkel body and door pillar bracket, use masking tape to cover the RHS A pillar.
23. Secure the door pillar bracket (F-10691) to the snorkel body using an M8 x 1.25 x 16mm hex head screw (1), M8 x Ø17mm stainless flat washer (1) and M8 stainless spring washer (1).

For product warranty please refer to our website: www.tjm.com.au



FITTING INSTRUCTIONS

Product:

Airtec Snorkel

Vehicle:

Toyota LandCruiser 200 Series

Part No.

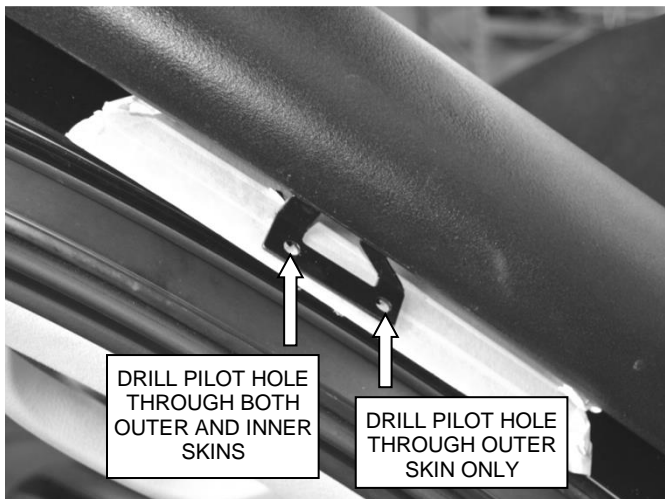
011SAT0182C



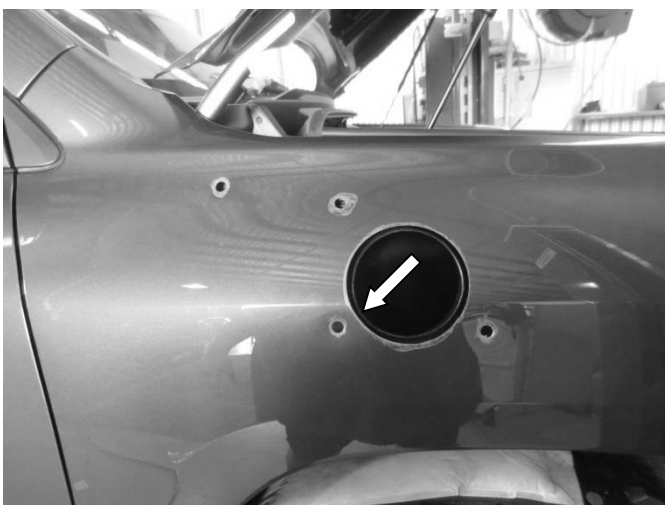
24. Temporarily place the snorkel body on the outer guard, ensuring the snorkel body is matching the vehicle body and A pillar contours.
25. Position the bottom edge of the door pillar bracket between 10 and 15mm above the first inner surface of the A pillar as shown.

Ensure the contours of the A pillar and the bottom edge of the door pillar bracket are aligned.

26. Use the door pillar bracket as a template and mark the two hole positions on the A pillar.



27. Remove the snorkel body and center punch the holes marked.
28. Drill 4mm pilot holes at the positions center punched. On the upper hole drill through both the outer and inner skins.
29. Drill the outer skin of both holes out to 8mm.
30. De-burr both holes, clean any swarf from the area and apply rust preventative to exposed surfaces.
31. Carefully apply silicone to the 8mm holes and insert the nylon plugs.



32. Apply neutral cure silicone along the inside edge of the intermediate tube shown.
33. Place the snorkel body on the outer guard and push the snorkel body into the intermediate tube.

For product warranty please refer to our website: www.tjm.com.au



FITTING INSTRUCTIONS

Product:

Airtec Snorkel

Vehicle:

Toyota LandCruiser 200 Series

Part No.

011SAT0182C



IMPORTANT:- Tighten Screws by Hand ONLY to **7 Nm Max** – No Air Tools are to be used.

34. Secure the door pillar bracket to the vehicle, using a screwdriver – by Hand, Fix the 3/4" x 8G stainless PK screws (2) to the vehicle. Do NOT use Air Tools to Tighten - Torque the two Screws to 7 Nm Max.

35. Secure the snorkel body to the outer guard, using 5/16" x Ø1-1/4" flat washers (4) and M8 x 1.25 nyloc nuts (4).

Tighten the front stud first, followed by the rear stud, then all remaining studs.

36. Tighten the fasteners securing the intermediate tube to the inner guard.

37. Tighten the hose clamp securing the intermediate tube to the snorkel body.



38. Refit the plastic inner guard using the fasteners retained in step 6.

39. Refit the mud flap using the fasteners retained in step 5.

40. Remove the plastic bag from the engine intake and refit the air box using the fasteners retained in step 3.

41. Check that all the fittings are secure and the fasteners are tensioned to the appropriate torque settings listed on page 1.

42. Ensure that, as a result of fitting the snorkel, no vehicle components are crushed or will chafe.

For product warranty please refer to our website: www.tjm.com.au