



# FITTING INSTRUCTIONS

<b>Product:</b>	<b>Airtec Snorkel</b>	
<b>Vehicle:</b>	<b>Mazda BT50 2.2 &amp; 3.2l Diesel</b>	
<b>Part No.</b>	<b>011SAT0146E</b>	<b>011SATW0146E</b>

- Before commencing fitment read instructions and ensure all listed components are supplied.
- Left hand & right hand components are determined as seated in the vehicle.
- The fitment of TJM products does not nullify the OE manufacturer's operating guidelines and/or warnings. Ensure you are familiar with and adhere to the usage instructions specified by the manufacturer in the owner's manual or other official documentation.
- When removing protective coatings, ensure all new edges are deburred, clean any swarf from the area and apply rust preventative to exposed surfaces.
- Always place the product on a soft work space to prevent damage prior to installation.
- To provide adequate sealing of the snorkel system all joints and openings must be sealed using neutral cure silicone. If the vehicle has a one way drain valve do not seal it as water entering through the snorkel head needs to drain. TJM recommend frequent inspections to confirm the air box is not retaining water especially after water crossings



Bolt tensions	Dia. (mm)	Nm	ft.lbs	Dia. (inch)	Nm	ft.lbs
All bolt tensions are as follows unless otherwise specified.	5	5	4	1/4"	9	7
	6	9	7	5/16"	22	15
	8	22	16	3/8"	33	27
	10	44	32	7/16"	55	43
	12	77	57	1/2"	86	66

For product warranty please refer to our website [www.tjm.com.au](http://www.tjm.com.au)



# FITTING INSTRUCTIONS

**Product:** Airtec Snorkel

**Vehicle:** Mazda BT50 2.2 & 3.2l Diesel

Part No. 011SAT0146E 011SATW0146E

Description	Qty	Part Number
<b>PARTS LIST</b>		
Snorkel Body	1	011MB00146E
Intermediate Tube	1	011IP00146E
Upper Snorkel Bracket	1	F-529
Hose Clamp	1	HC052
Hose Clamp (Black)	1	HC052B
Air-Cleaner Unit Intake Opening Foam Gasket/Tape	1	TT2415G
Template – Body Guard	1	F-1946-T

<b>BOLT KIT</b>		
M6 x 1.0 x 16mm Hex Head Bolt (Zinc)	1	BHM616Z
M6 Spring Washer (Zinc)	1	WSM6ZP
M6 x Ø12.5mm Flat Washer (Zinc)	1	WFM6ZP
M8 x 1.25 x 16mm S/Steel Button Head Socket Screw (Black)	1	SBHM816D
M8 x 1.25 x 16mm Hex Head Screw (Zinc)	2	BHM816Z
M8 x 1.25 x 30mm Stud (Zinc)	5	SM830GOLD
M8 x 1.25 Nyloc Nut (Zinc)	5	NNM8
M8 S/Steel Spring Washer (Black)	1	WSM83D
M8 Spring Washer (Zinc)	2	WSM832Z
M8 x Ø17mm S/Steel Flat Washer (Black)	1	WFM817D
5/16" x Ø7/8" Flat Washer (Zinc)	1	W51678Z
5/16" x Ø1-1/4" Flat Washer (Zinc)	6	WF5161146ZPG
8g x 16mm Stainless Screw	2	

<b>011SAT0146E Only</b>		
Air Ram	1	011AR14B97T

<b>011SATW0146E Only</b>		
Wedgetail	1	011AIRWT550

For product warranty please refer to our website [www.tjm.com.au](http://www.tjm.com.au)



# FITTING INSTRUCTIONS

Product:

Airtec Snorkel

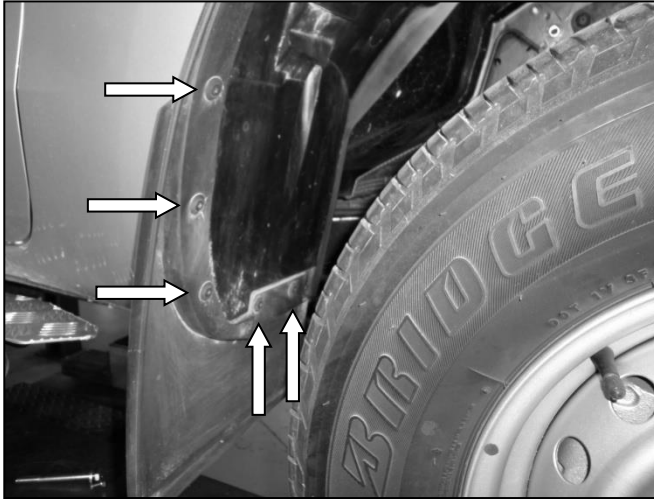
Vehicle:

Mazda BT50 2.2 & 3.2l Diesel

Part No.

011SAT0146E

011SATW0146E

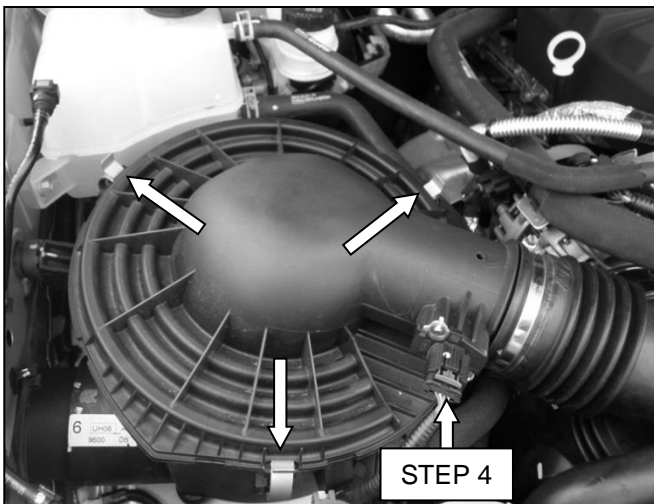


1. To ensure that the correct template has been supplied, position the "Outer Guard" template over the snorkel body, ensuring that the hole positions match.

2. Position the vehicle on a hoist so as to allow access to the RHS plastic inner guard.

***It is suggested, but not required, that you remove the RHS front wheel so as to allow complete access to the wheel arch/body guard cavity.***

3. Remove (& retain) the mud-flap & plastic inner guard from the vehicle, retaining all of the fasteners.



4. Disconnect the harness connector from the indicated sensor, then unclip the sensor wiring from the air-cleaner unit.

5. Retaining the hose clamp, disconnect the outlet hose from the air-cleaner unit, making sure to cover the end of the outlet hose, so that no foreign matter can enter the system during the installation process.

6. Unclip the clamps (3) from the top of the air-cleaner unit & remove the lid.

7. Remove (& retain) the filter element from the air-cleaner unit base.



8. Loosen the hose clamp securing the air-cleaner unit intake tube to the air-cleaner unit, then discard the air-cleaner unit intake tube (& hose clamp).

For product warranty please refer to our website [www.tjm.com.au](http://www.tjm.com.au)



# FITTING INSTRUCTIONS

Product:

Airtec Snorkel

Vehicle:

Mazda BT50 2.2 & 3.2I Diesel

Part No.

011SAT0146E

011SATW0146E



9. Locate the fasteners (2) securing the base of the air-cleaner unit, then remove (& retain) them.
10. Where present, unclip any attached hoses/wiring from the air-cleaner unit base.



11. Remove (& retain) the air-cleaner unit base from the vehicle.
12. Remove (& discard) the screws (2) securing the intake socket to the air-cleaner unit base, then remove (& discard) the intake socket.



13. Affix the adhesive foam tape to the air-cleaner unit base, on the inside of the intake opening (as shown).

For product warranty please refer to our website [www.tjm.com.au](http://www.tjm.com.au)



# FITTING INSTRUCTIONS

Product:

Airtec Snorkel

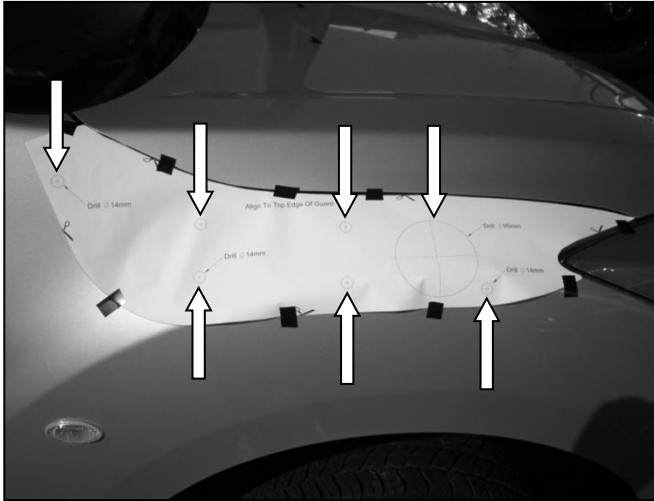
Vehicle:

Mazda BT50 2.2 & 3.2l Diesel

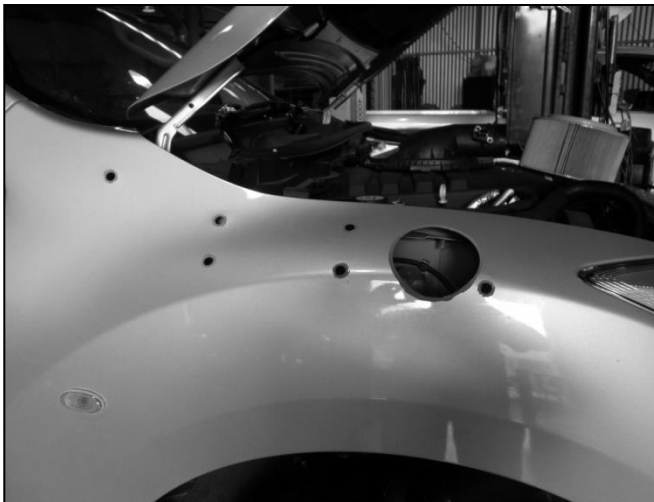
Part No.

011SAT0146E

011SATW0146E



14. Trim the supplied "outer guard" template to shape, along the noted edges on the template.
15. Accurately aligning the template with the forward & top edges of the RHS body guard, tape it in place (as shown).
16. Centre-punch the Ø14mm (6) & Ø95mm (1) hole positions.
17. Remove (& discard) the template from the vehicle, then drill Ø3mm pilot holes at all of the previously centre-punched positions.
18. Drill the Ø14mm & Ø95mm hole positions out to size.



19. De-burr the holes/edges, then thoroughly clean the area/surface of any swarf/debris, then treat any raw exposed surfaces with a rust preventative.



20. Re-fit the air-cleaner unit base back into position & lightly tighten the fasteners from step 9.
21. With the hose clamp in place, position the intermediate tube as shown, with the front protruding through the opening made available in step 8 & into the engine bay.

For product warranty please refer to our website [www.tjm.com.au](http://www.tjm.com.au)





# FITTING INSTRUCTIONS

**Product:**

**Airtec Snorkel**

**Vehicle:**

**Mazda BT50 2.2 & 3.2l Diesel**

Part No.

011SAT0146E

011SATW0146E



22. Position the retaining bracket as shown & secure it to the vehicle, using an M6 x 1.0 x 16mm hex bolt (1), M6 spring washer (1) & M6 x Ø12.5mm flat washer (1).
23. Secure the retaining bracket to the intermediate tube, using an M8 x 1.25 x 16mm hex screw (1), M8 spring washer (1) & 5/16" x Ø7/8" flat washer (1).



24. To avoid damaging the area when positioning the snorkel body/snorkel bracket, mask the RHS windscreen pillar.



25. Aligning the captive nuts in the snorkel body with the Ø14mm holes drilled in step 18 &, with the snorkel outlet opening inside the intermediate tube, place the snorkel body in position, on the vehicle.
26. Loosely secure into the rear-most upper captive nut, using an M8 x 1.25 x 16mm hex screw (1), M8 spring washer (1) & 5/16" x Ø1-1/4" flat washer (1).
27. Loosely secure into the remaining captive nuts, using M8 x 1.25 x 30mm studs (5), 5/16" x Ø1-1/4" flat washers (5) & M8 nyloc nuts (5).

For product warranty please refer to our website [www.tjm.com.au](http://www.tjm.com.au)



# FITTING INSTRUCTIONS

Product: Airtec Snorkel

Vehicle: Mazda BT50 2.2 & 3.2i Diesel

Part No. 011SAT0146E 011SATW0146E



28. Orientating the snorkel bracket as shown, loosely secure it to the top of the snorkel body, using an M8 x 1.25 x 16mm stainless button screw (1), M8 x Ø17mm stainless flat washer (1) & M8 stainless spring washer (1).

29. Using the holes in the snorkel bracket as a template, mark the two hole positions onto the windscreen pillar.



30. Check the clearances between the snorkel body, intermediate tube, air-cleaner unit & vehicle.

***As required, trim the mouldings & slot the respective holes to achieve an appropriate fit.***

31. Remove (& retain) the snorkel bracket (& respective fasteners) from the snorkel body.

32. Remove the snorkel body (& respective fasteners) from the vehicle.



33. Drill Ø2mm holes at the positions previously marked in step 29.

34. Remove the tape from the RHS windscreen pillar.

35. Thoroughly clean the area/surface of any swarf/debris, then treat any raw exposed surfaces with a rust preventative.

36. Secure the snorkel bracket to the vehicle through the holes using 8g x ¾" stainless screws (2).

For product warranty please refer to our website [www.tjm.com.au](http://www.tjm.com.au)



# FITTING INSTRUCTIONS

**Product:**

**Airtec Snorkel**

**Vehicle:**

**Mazda BT50 2.2 & 3.2i Diesel**

Part No.

011SAT0146E

011SATW0146E



37. Release (& retain) the fasteners installed in step 22, then remove (& retain) the intermediate tube from the vehicle.
38. Apply a liberal coating of a neutral cure silicone to the inside face of the intermediate tube inlet opening.
39. Apply a thin coating of a neutral cure silicone to the outside face of the intermediate tube outlet opening.
40. Apply a thin coating of neutral cure silicone to the foam tape installed in step 13.
41. Carefully re-fit the intermediate tube to the vehicle, as per steps 21 & 22, utilising the fasteners from step 22.



42. Apply a liberal coating of neutral cure silicone around the external face of the snorkel outlet opening.
43. Apply loctite 271 threadlocker compound (or an equivalent) to the captive nuts in the snorkel body, then carefully re-fit the snorkel body back to the vehicle (as per step 25), utilising the fasteners from step 26 & 27.
44. Fully tighten the hose clamp on the intermediate tube.



45. Secure the snorkel bracket to the snorkel body, using the fasteners from step 28.
46. Check the connection points of the snorkel body, intermediate tube & air-cleaner.
47. Clean any excess neutral cure silicone from the connection points.
48. Check the clearance between the intermediate tube & the inner guard panel.
49. Tighten all of the fasteners securing the previously manipulated components in place to the appropriate torque settings.

For product warranty please refer to our website [www.tjm.com.au](http://www.tjm.com.au)





# FITTING INSTRUCTIONS

Product:

Airtec Snorkel

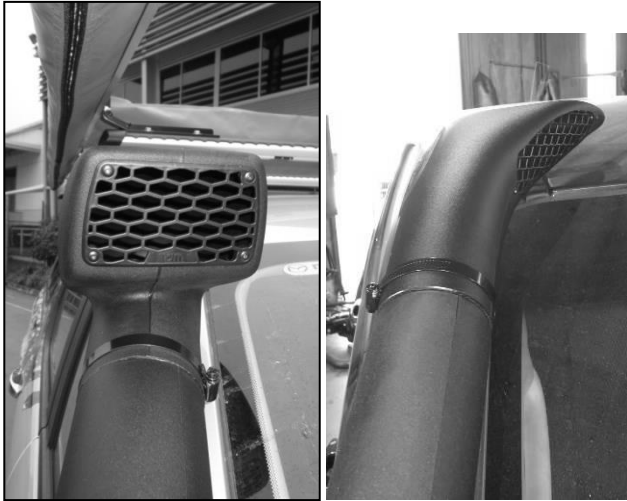
Vehicle:

Mazda BT50 2.2 & 3.2I Diesel

Part No.

011SAT0146E

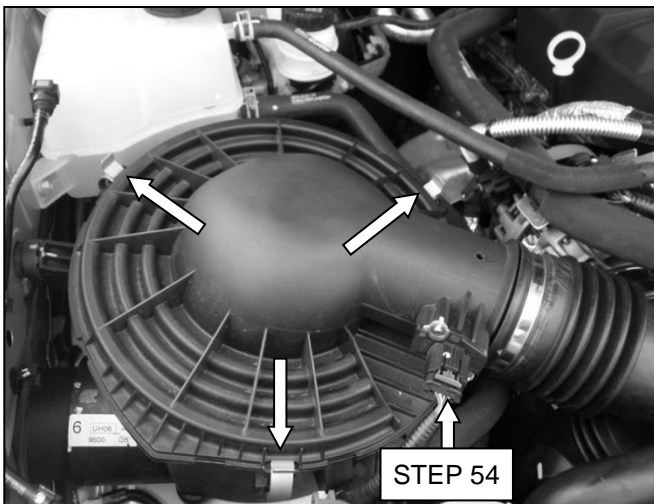
011SATW0146E



50. If fitting an Air Ram, position on the snorkel body so that the fasteners securing the mesh are horizontal. Secure in place using the black hose clamp supplied.

51. If fitting a Wedgetail, position on the snorkel body so that the wedgetail is parallel to the windscreen. Secure in place using the black hose clamp supplied.

***To prevent possible chaffing/damage, position the hose clamp so that the worm drive is positioned at the rear of the snorkel body & ensure that there is sufficient clearance for the door to open.***



52. Re-fit the filter element to the air-cleaner unit base. Re-fit the lid of the air-cleaner unit.

53. Uncover the outlet hose, then reconnect it to the air-cleaner unit, using the hose clamp retained in step 5.

54. Re-connect the previously removed harness connector.

55. Re-connect any hoses/wiring that were removed during the removal of the air-cleaner unit.

56. Re-fit the plastic inner guard & mud-flap to the vehicle, using the fasteners from step 3.

***Where applicable, re-fit the RHS front wheel & tighten to the applicable torque settings.***

57. Ensure that all of the relevant wiring looms are connected & check that the associated systems are functioning correctly.

58. Ensure that all of the fasteners are fully tightened to the appropriate torque settings & that, as a result of fitting the product, no vehicle components are crushed or will chafe.

For product warranty please refer to our website [www.tjm.com.au](http://www.tjm.com.au)